



User Manual

GD-HW-BPBB0550G

EN

Quick Guide

About this guide

The guide includes instructions for using and managing the product. Pictures, charts, images and all other information hereinafter are for description and explanation only. The information contained in the guide is subject to change, without notice, due to firmware updates or other reasons.

Please find the latest version at **WWW.GRUNDIG-SECURITY.COM**

Limitation of Liability / Legal Disclaimer

Abetechs GmbH (Grundig Security) undertakes all reasonable efforts to verify the integrity and correctness of the contents in this document, but no formal guarantee shall be provided. Use of this document and the subsequent results shall be entirely on the user's own responsibility. Abetechs GmbH (Grundig Security) reserves the right to change the contents of this document without prior notice. Design and specifications are subject to change without prior notice.

The product described herein, with its hardware, software and documentation is provided "as is", without any warranty, expressed or implies, including without limitation, merchantability, satisfactory quality, fitness for a particular purpose, and non-infringement of a third party.

In no event will our company and its employees or agents be liable to you for any special, consequential, incidental, or indirect damages, including among others, damages for loss of business profits, business interruption, or loss of data or documentation, in connection with the

use of this product, even if our company has been advised of the possibility of such damages.

Regarding to products with internet access, the use of the product shall be wholly at your own risks. Our company shall not take any responsibilities for abnormal operation, privacy leakage or other damages resulting from cyber-attack, hacker attack, virus inspection, or other internet security risks; however our company will provide timely technical support if required. Surveillance laws vary by jurisdiction before using this product in order to ensure that your use conforms to the applicable law. Our company shall not be liable in the event that this product is used with illegitimate purposes.

In the event of any conflicts between this manual and the applicable law, the later prevails.

Trademark

Each of trademarks herein is registered. The name of this product and other trademarks mentioned in this manual are the registered trademark of their respective company.

Copyright of this document is reserved. This document shall not be reproduced, distributed or changed, partially or wholly, without formal authorization.

Safety and Installation Instructions

Introduction

Please read these instructions carefully and keep them for future reference. You must heed all the warnings and cautions as well as follow all the safety and installation instructions.

The appearance of the products, functions and firmware or software upgrade may differ from this manual.

GRUNDIG reserves the right to perform needed changes without prior notice.

Safety Instructions

Make sure that you only use the power adapter that is specified in the specifications sheet of the product. If you use any other adapter or connect the power supply incorrectly, this may cause explosion, fire, electric shocks or damage the product. Do not connect several devices to one power adapter as this may cause an adapter overload and can lead to over-heating and fire. Make sure that the plug of the power adapter is firmly connected to the power socket.

Do not place containers with liquids on the product. Do not place conducting items like tools, screws, coins or other metal items on the product. These may fall from the product or can cause fire or electric shocks or other physical injuries.

Do not push or insert any sharp items or any objects into the device as this may cause damage to the product, fire, electric shocks and/or physical injuries.

Do not block any ventilation openings, if there are any. Ensure that the product is well ventilated to prevent any over-heating.

Do not subject the device to physical shock or drop the product.

If the product uses batteries, please use a battery type that is recommended by the manufacturer. Improper use or replacement of the battery may result in the hazard of explosion.

Do not use any accessories that are not recommended by GRUNDIG. Do not modify the product in any way.

If the product starts to smell or smoke comes out of the device, immediately stop using the product and disconnect it from the power supply to prevent fire or electric shocks. Then contact your dealer or the nearest service center.

If the product does not work correctly, contact your dealer or nearest service center. Never open, disassemble or alter the product yourself. GRUNDIG cannot accept any liability or responsibility for problems caused by attempted and unauthorized repair and maintenance.

Installation Instructions

It is necessary to fix the device firmly if the product is installed on a wall or ceiling. Do not install the product on surfaces or in places that are vibrating. Do not install the product near radiation sources.

Do not install the product near heat sources, like radiators or other equipment that produces some heat. If the product is not classified by any IP class, do not install the product in very cold or hot temperatures (please refer to the working temperature specified in the specification sheet of the product), dusty, dirty or damp environment.

If the product is classified by any IP class, never touch the product cover directly with your fingers, because the acidic sweat of the fingers may damage the surface coating of the product cover. To clean the inside and outside of the product cover, use a soft and dry cloth. In any case, do not use alkaline detergents. The correct configuration of all passwords and other security settings is the sole responsibility of the installer and/or end-user (this applies especially to IP Cameras and Recorders).

Table of Contents

1 Function	7
2 Appearance and Display Introduction	8
3 Technical Data	9
4 General.....	10
4.1 Mounting	10
4.2 Operation.....	10
4.3 Maintenance.....	11

1 Function

The product is specially designed for calibrating body temperature detection thermal device and thermal inspection device in various sizes.

Excellent temperature uniformity, accuracy, and stability of calibration.

Adopts intelligent temperature controller and has high temperature control accuracy.

2 Appearance and Display Introduction

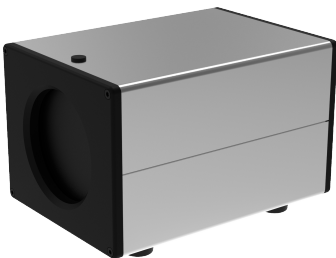


Figure 2-1 Device Appearance

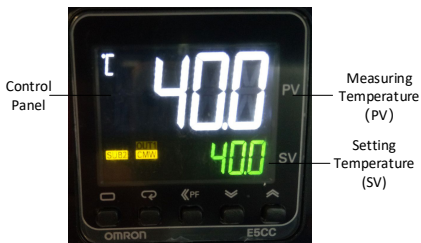


Figure 2-2 Temperature Controller

3 Technical Data

Parameter	Value
Temperature Range	Adjustable: environment temperature +5 °C (9 °F), up to 50°C (122 °F)
Effective Radiating Area	Φ 70 mm (2.76")
Temperature Resolution	0.1 °C (0.18 °F)
Temperature Accuracy	± 0.1 °C (0.18 °F)
Temperature Stability	± 0.1 °C/h
Effective Emissivity	0.97 ± 0.02
Power Consumption	20 W
Environment Temperature	0 °C to 40°C (32 °F to 104 °F)
Weight	1.85 Kg (4.08 lb)
Dimension	120 mm × 176.6 mm × 119.6 mm (4.72" × 6.95" × 4.71")
Power	100 VAC to 240 VAC
Mounting	Mounting on a plane desk or a tripod with 1/4-20UNC Interface or a ceiling mount bracket with 1/4-20UNC Interface

4 General

4.1 Mounting

Check the power supply. The working voltage should be 100 VAC-240 VAC, 35 W.

Check if the desk is horizontal.

Mount the device on the desk or a tripod in front of the thermal camera firmly. The distance to the camera is depending on the camera model. Make sure that the front of black body can show in the live view of thermal camera completely, and outside the temperature measurement area.

Switch on the device, and the power indicator is on. The factory default setting temperature is 40 °C.

4.2 Operation

Connect the black body with a 10 A socket via the power cable.

Switch on the device, and the power indicator is on. The factory default setting temperature is 40 °C.

Wait for 30 minutes after switching on device. You can calibrate the thermal camera when the temperature is stable at 40 °C.

Switch off the black body and store it after use.

4.3 Maintenance

The black body should be managed and maintained by professional person and maintenance and usage should be recorded.

DO NOT use the device in an environment with oil or chemical air.

To ensure the temperature accuracy, place the device firmly in the environment with stable temperature. The recommended using environment temperature is 10 °C to 25 °C (50 °F to 77 °F)

Power off the device before mounting or removing it.

Clean the surface of device with a neutral detergent. Clean the dust on the black body with a soft brush.

Store the device in the packing box after use to prevent dust. Make sure the environment temperature is suitable.

DO NOT dismantle the device without authorization. Contact the professional specialist for repairing.

To ensure the temperature accuracy, it is recommended to calibrate the black body once a year. Please send the device to qualified calibration institute.

UG-GD-HW-BPBB0550G-2020-04-09-V4-EN ©ABETECHS GMBH, DÜSSELDORF, GERMANY

grundig-security.com

GRUNDIG