

# 64 Channel Video Recorder

## GU-RN-CP8864N

# GRUNDIG



Type: Standalone NVR - IP - Recorder  
Item Code: GU-RN-CP8864N  
EAN CODE: 4260573067008

### SMART

The SMART product line offers comprehensive coverage of modern video systems with advanced AI analysis and solutions for various application areas.

## Highlights

### H.265+



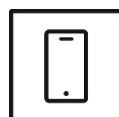
H.265pro+ utilizes the standard H.265/High Efficiency Video Coding (HEVC) format, but boasts advanced technologies that enable it to substantially reduce the necessary transmission bandwidth and storage capacity for maximum efficiency.

### Object Classification



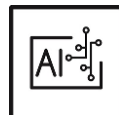
This technology employs a highly advanced deep learning algorithm that can discern whether the alarm was triggered by a human, a vehicle or some other object.

### Smartphone App



The mobile application was developed to facilitate operators in effectively controlling and managing video systems remotely, at any time. It allows for live image viewing, playback of recorded video data, and receipt of remote notifications.

### Deep Learning



Deep Learning is inspired by the complex structure of the human brain. This innovative method allows processing of information and performing corresponding actions based on analysis.

## Features

- Many intelligent functions: deep learning distinguishing between human and vehicles, detection of line crossing, intrusion, queue length, crowd density, lost objects and display of heat map. Recognition of car license plates and faces including allowed and blocked lists. Counting of different Objects.
- RAID configuration
- Hot Spare Mode - working as Failover Server for another NVR
- Video recording with NAS System and Local HDD

## NDA compliant

GRUNDIG Security's SMART line is fully compliant with the National Defense Authorization Act (NDAA), which prohibits U.S. federal agencies and their partners from using video surveillance and telecommunications equipment or services from certain Chinese companies. This law is part of the John S. McCain NDAA and is effective August 2020.

With our SMART product line, you can be confident that your security system complies with this important regulation. Our products meet the highest standards of quality and reliability, providing you with the security you need to protect your assets and personnel.

## Specifications GU-RN-CP8864N

### Video

IP Inputs:	64 channels
Privacy zones:	multiple zones (min. 4), depending on camera

### Recording / Playback

Recording Bandwidth:	640 Mbit/s
Outgoing Bandwidth:	640 Mbit/s
Recording Resolution:	12 MP, 8 MP, 5 MP, 3 MP, 1080P, 960P, 720P
Recording Mode:	Continuous, Event Alarm, Motion, Video Loss, Schedule
Search Mode:	Date, Time, Event Alarm, Motion, Search Backup
Smart Search Function:	Search for people, motorized vehicles, non-motorized vehicles, intrusion and line crossing, thumbnails, tags, faces and characteristics, attendance, visit frequency and license plates
Playback:	Synchronised playback of max. 16 cameras
Frame Rate(R):	4K: 240fps, 4MP: 480fps, 2MP: 960fps

### Audio

Audio Compression:	G.711
Audio Detection:	Detects unusual noises: dogs barking, babies crying, gunshots, sudden sound increase and decrease

### General

External Backup:	USB HDD, USB Memory, Network
Max. Storage Capacity:	Up to 18 TB capacity for each HDD (Enterprise-Class)
Languages:	Czech, Dutch, English, Finnish, French, German, Italian, Portuguese, Spanish, Russian, Turkish, Polish
Log File Support:	Events, macros, changes, activities per user
PTZ Control:	Pan, Tilt, Zoom, Preset set and call
Basic Internal Storage:	No
Accessories included:	Mouse, Sata cable, 19 inch rack mount kit

### Network

Number of Clients:	Up to 32, 20 simultaneously
Functions:	Automatic detection of connected devices in the network, real-time monitoring, synchronous playback of video footage from multiple cameras, playback via timeline, fast, slow, forward and reverse, multi-level user rights, fisheye dewarping, privacy mask.
Video Compression:	H.264, H.264+, H.265, H.265+
Cyber Security:	Different password levels, password protection, password change prompt at first startup, complicated password, HTTPS encryption, digest authentication for HTTP/HTTPS, IP address filter, WSSE and digest authentication for ONVIF, RTP/RTSP over HTTPS, control timeout settings, security audit log, TLS 1.0, TLS 1.1 & TLS 1.2, TLS 1.2 with updated cipher suites including AES 256 encryption, Brute Force Delay Protection of 180 s after 5 login attempts, Signed Firmware.

Network	
Remote Connections:	32
Streaming Method:	Unicast, Multicast
I/O Interface	
RAID:	RAID 0, RAID 1, RAID 5, RAID 6, RAID 10
HDMI Output:	HDMI1, 2 & 3: 3840 x 2160 (EDID/4K), 2560 x 1440, 1920 x 1080, 1440 x 900, 1280 x 1024, 1280 x 720, 1024 x 768 HDMI4: 1920 x 1080, 1440 x 900, 1280 x 1024, 1280 x 720, 1024 x 768
Audio Input/Output:	1-ch audio input and 1-ch audio output
Alarm Input/Output:	16/4
Harddisk bay:	8 x SATA III, 1 x eSATA
Network Interface:	2x 100, 1000 Base T, TX (RJ-45)
Serial Interface(s):	Front panel: 1x USB 2.0, Rear panel: 2x USB 3.0, 1x RS-485, 1x RS-232
Intelligent Functions	
Motion Detection:	Adjustable whether people, motorized or non-motorized vehicles or only movements should be detected. The detection area and sensitivity can also be adjusted.
People & Vehicle Detection:	Adjustable whether people, motorized or non-motorized vehicles should be detected.
Intrusion Detection:	People, motorized vehicles or non-motorized vehicles, enter, exit or drive over a predefined virtual area, up to 4 rules are supported
Line Crossing:	People, motorized vehicles or non-motorized vehicles cross a pre-defined virtual line, up to 4 rules are supported
Object Removal:	Detects objects left over or lost in the pre-defined region such. In this case an alarm notification or signal will be sent automatically and in real time.
Object Counting:	People, motorized vehicles, non-motorized vehicles or other movements are counted when crossing a virtual line and the result is displayed on the screen in real time
Face Detection:	Human face appears in the image can be detected and trigger event action
Face Recognition:	Detects and recognizes faces by comparing them to stored portrait images. Actions can be triggered via the allowed, blocked and other list
License Plate Recognition:	Detects and recognizes car number plates. Data- import- export function, actions can be triggered via the allowed, blocked and other list
Heat Map:	Visualizes the number of people in the surveillance area over a period of time with a simple and user-friendly color scheme
Queue Length Detection:	Counts people in a predefined area and measures service time. The area, the maximum number of people in it and the maximum service time can be set
Crowd Density Detection:	Counts people in a predefined area. The area, the maximum number of people in it can be set
Tamper Protection:	Detection of scene change, defocus, sudden audio increase/decrease or audio loss.
Limits of intelligent functions:	Some functions are only available if supported by the connected camera. Some features are limited by the number of supported channels.
Event Source:	Motion, AI Functions, Video Loss, Network Interruption, Video Tampering, HDD Full, HDD Error, Audio Detection and Alarm Inputs
Event Action:	Send e-mail, trigger alarm output, push notification for GSVM App and C-WERK, upload to FTP/Cloud, trigger HDD recording and/or image capture, show message on screen, PTZ linkage, voice prompt, buzzer
Approvals	
Regulation:	CE, EAC, FCC, RoHS Compliant
Standard:	ONVIF (Profile S, Profile G, Profile T), SDK/API
MTBF at 25° C:	>60.000 hours
Environmental	
Operating Temperature:	-10 °C ~ +50 °C (+14°F ~ + 122°F)

### Environmental

Humidity: Less than 90%, non condensing

### Electrical

Supply Voltage: 100 ~ 240 VAC, 50Hz / 60Hz

Power Consumption: ≤ 8 W without harddisk

### Mechanical

Dimensions: 440 × 460 × 89 mm (17.3 × 18.11 × 3.5 inch)

Weight: 7500 g (16.5 lb)

### Packaging

Package Dimensions: 555 x 535 x 210 mm (21.9 x 21.1 x 8.3 inch)

Package Weight: 9000 g (19.8 lbs)

Packaging Unit: 1

## Accessories



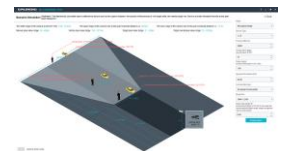
GD-HW-HDDE-18TB



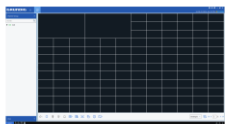
GD-HW-HDDE-14TB



GD-HW-HDDE-10TB



GU-SW-INST-TOOL



GU-SW-VMS



GU-SW-IP-FINDER



GU-SW-PLAYER



GD-HW-HDD-16TB



GD-HW-HDD-2TB



GD-HW-HDD-4TB



GD-HW-HDD-6TB



GD-HW-HDD-8TB



GD-HW-HDD-10TB



GD-HW-HDD-12TB



GD-HW-HDD-14TB



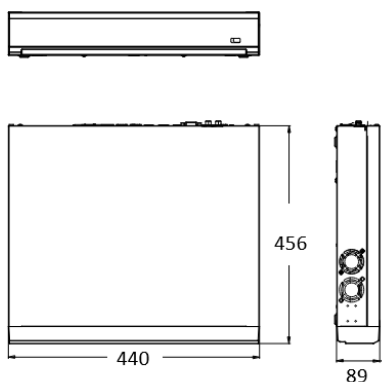
GD-HW-HDD-18TB



GU-KB-AP4450M

## Dimensions

---



## Smart Line

---

In addition to the usual reliability, the SMART product line from GRUNDIG Security offers numerous image analysis functions, supported by artificial intelligence (AI). For example, use the LPR function to recognize license plates or facial recognition to identify people. Or reduce the number of false alarms by classifying objects as 'Vehicle', 'Person' or 'Other'. GRUNDIG Security's SMART cameras are able to detect people in crowds, count the number of heads and measure the length of queues, e.g. B. to be determined in the checkout area. In this way, they help you to use your resources optimally. They also inform you if unauthorized people cross predefined lines or enter certain areas.

## Environmentally friendly packaging

---

Our environmentally friendly packaging with less colour print is made from 100% recyclable material. To save resources, our detailed operating instructions are available online for download. The quick reference guides that come with the devices are printed on 100% recycled paper.