



Type: Turret - IP - Camera  
Item Code: GU-CI-AT8634E  
EAN CODE: 4260573067114

**SMART**

The SMART product line offers comprehensive coverage of modern video systems with advanced AI analysis and solutions for various application areas.

**Highlights**

**Ultra Low Light**



Designed for unparalleled performance in low-light environments, this camera incorporates advanced image processing and a high-capacity image sensor, ensuring exceptional image quality even in ultra-low light conditions.

**Object Classification**



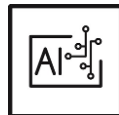
This technology employs a highly advanced deep learning algorithm that can discern whether the alarm was triggered by a human, a vehicle or some other object.

**H.265+**



H.265pro+ utilizes the standard H.265/High Efficiency Video Coding (HEVC) format, but boasts advanced technologies that enable it to substantially reduce the necessary transmission bandwidth and storage capacity for maximum efficiency.

**Deep Learning**



Deep Learning is inspired by the complex structure of the human brain. This innovative method allows processing of information and performing corresponding actions based on analysis.

**Features**

- Reduction of unwanted alarms (false alarms) by classifying target objects using deep learning algorithms. This significantly reduces false alarms generated by objects other than people or vehicles. This makes finding events easier and saves hard drive capacity
- 4K Resolution for super detailed images
- Excellent low-light performance
- Many AI functions integrated such as face detection, intrusion detection, object counting, queues, heat map and much more
- Built-in Microphone & Speaker
- White light flash and audible alarm deterrent function

## Active Deterrence

The Active Deterrence system helps deter potential intruders at an early stage. Thanks to built-in light sources and/or speakers, possible criminal activities can be prevented before they occur. Depending on the scenery, cameras with either a white or a red-blue light source are available. With its integrated deep-learning algorithm, the system can reliably identify individuals. If an intrusion alarm is triggered, it not only sends an alert but also delivers the corresponding video footage directly to a mobile device in real-time.

## NDA compliant

GRUNDIG Security's SMART line is fully compliant with the National Defense Authorization Act (NDAA), which prohibits U.S. federal agencies and their partners from using video surveillance and telecommunications equipment or services from certain Chinese companies. This law is part of the John S. McCain NDAA and is effective August 2020. With our SMART product line, you can be confident that your security system complies with this important regulation. Our products meet the highest standards of quality and reliability, providing you with the security you need to protect your assets and personnel.

## Specifications GU-CI-AT8634E

### Camera

Image Sensor:	1/1.8" progressive Scan CMOS
Video Resolution:	3840 × 2160
Sensitivity Colour:	0.001 Lux @ F1.2 (AGC ON)
Sensitivity B/W:	0 Lux LED IR on
Shutter Speed:	1/5 ~ 1/20000 s
Slow Shutter:	Support
White Balance:	Auto, Manual

### Lens

Lens Focal Length:	2.8 ~ 12 mm motorized, autofocus
Iris F-Number:	F1.2
Lens Drive Type:	Fixed Iris
Focus Adjustment:	Auto- Focus, Manual - Focus
Optical Zoom Ratio:	4x
Field of View:	113° ~ 48° (horizontal), 59° ~ 27° (vertical), 139° ~ 55° (diagonal)

### Illuminator

Max. IR Distance:	Up to 45 m
White Light Distance:	Up to 30 m
White LED:	yes

### Video

Col/B&W:	Auto , Color , B&W, IR-cut filter removable (ICR)
Wide Dynamic Range:	120 dB
Image Enhancement:	BLC, 3D DNR, HLC, DIS, DEFOG
Image Settings:	Corridor mode, Saturation, Brightness, Contrast, Sharpness and white balance adjustable by client software or web browser
Day/Night Switch:	Support auto, scheduled, day, night
Privacy zones:	4 zones, rectangle

### Audio

Audio Compression:	G.711
--------------------	-------

**Audio**

Audio Detection:	Detects unusual noises: dogs barking, babies crying, gunshots, sudden sound increase and decrease
------------------	---

**General**

DRI Range:	Tele: Detection: 186.6 m, Observation: 74.6 m, Recognition: 37.3 m, Identification: 18.7 m Wide: Detection: 87.6 m, Observation: 35 m, Recognition: 17.5 m, Identification: 8.8 m DORI (Detect, Observe, Recognize and Identify) is a standard system (EN-62676-4) for defining the ability of a person viewing the video to distinguish persons or objects within a covered area. The numbers in this table do not reflect intelligent function distances.
Log File Support:	Events, macros, changes, activities per user (not erasable by resetting the camera to factory settings)

**Frame Rate**

Main Stream:	50 Hz: 25 fps (3840 × 2160, 3072 × 1728, 2592 × 1944, 2592 × 1520, 2304 × 1296, 1920 × 1080, 1280 × 720) 60 Hz: 30 fps (3840 × 2160, 3072 × 1728, 2592 × 1944, 2592 × 1520, 2304 × 1296, 1920 × 1080, 1280 × 720)
Sub- Stream:	50 Hz: 25 fps (1920 × 1080, 1280 × 720, 640 × 480) 60 Hz: 30 fps (1920 × 1080, 1280 × 720, 640 × 480)
3rd Stream:	50 Hz: 25 fps (640 × 480, 320 × 240) 60 Hz: 30 fps (640 × 480, 320 × 240)

**Network**

Functions:	One-key reset, anti-flicker, three streams, mirror, password protection, privacy mask, IP-address filter
Video Compression:	H.264, H.264+, H.265, H.265+, MJPEG
Bit Rate:	256 Kbps to 16 Mbps
Bitrate control:	Constant Bitrate (CBR), Variable Bitrate (VBR)
Streaming Method:	Unicast, Multicast
SD Memory:	Micro SD/SDHC/SDXC card slot with ANR (up to 256G), NAS (Support NFS, SMB/CIFS)
Client software:	C-WERK Viewer, Smart-Line Client PC-Software, IOS App, Android App (GSVM)
Web Browser:	Safari V12.1+, Mozilla Firefox V.52+, Google chrome V.57+, MS Edge V.79+
Web Browser:	Plug-in required live view: IE10/IE11 Non Plug-in live view: Chrome 57+, Mozilla Firefox 52+, EDGE 89+ Local Service: Chrome 57+, Firefox 52+, EDGE 89+
Network Protocol:	TCP/IP, HTTP, HTTPS, FTP, DHCP, DNS, DDNS, RTP, RTSP, NTP, UPnP, SMTP, SNMP, 802.1X, IPv4/IPv6, PPPoE
Cyber Security:	2 levels of user management: admin, user, AES Encryption for Password Protection, password change prompt at first startup, Complicated Password, HTTPS (SSL) Login Authentication, Basic and digest authentication for HTTP/HTTPS, 802.1X authentication, (EAP-LEAP), 802.1X authentication (EAP-TLS), Watermark, IP Adress Filter, WSSE and digest authentication for ONVIF, SNMP V2, SNMP V3, TLS 1.0, TLS 1.1, Brute Force Delay Protection of 300s after 5 login attempts, Signed Firmware, Secure Boot by hardware check

**I/O Interface**

Audio Input/Output:	1 Input: line in or mic in & built-in microphone, 1 Output: line out & built in speaker, mono sound
Alarm Input/Output:	1, 1
Network Interface:	1x 10, 100 Base T, TX PoE (RJ-45)

**Intelligent Functions**

Crowd Density Detection:	Counts people in a predefined area. The area, the maximum number of people in it can be set
Face Detection:	Face recognition in real time and instantly match them against a watchlist

**Intelligent Functions**

Fall detection:	Fall detection is an AI-powered system that analyzes live video from security cameras to automatically recognize when a person falls. It identifies unusual body posture changes, rapid downward movement, or loss of balance, then triggers alerts so responders can act quickly—without requiring any wearable devices.
Fire Detection:	Detects fire in the image scene
Heat Map:	Visualizes the number of people in the surveillance area over a period of time with a simple and user-friendly color scheme
Intrusion Detection:	People, motorized vehicles or non-motorized vehicles, enter, exit or drive over a predefined virtual area, up to 4 rules are supported
License Plate Recognition:	Detects and recognizes car number plates. (Data- import- export function, actions can be triggered via the allowed, blocked and other list, only supported with insert SD-Card).
Object Counting:	Entrance and Exit object number is accounted and showed on screen in real time
Line Crossing:	People, motorized vehicles or non-motorized vehicles cross a pre-defined virtual line, up to 4 rules are supported
Object Removal:	Detects within a predefined, adjustable area objects that were originally placed in a specific location and have been removed, as well as objects that have been left behind there
People & Vehicle Detection:	Adjustable whether people, motorized or non-motorized vehicles should be detected.
Queue Length Detection:	Counts people in a predefined area and measures service time. The area, the maximum number of people in it and the maximum service time can be set
Motion Detection:	On, Off, Area Setting, Sensitivity
Region Entrance:	Enter a pre-defined virtual region from the outside place
Region Exiting:	Exit from a pre-defined virtual region
Limits of intelligent functions:	Only Intrusion Detection, Area Entrance, Area Exit, Line Crossing and Heat Meap can be used simultaneously.
Event Source:	Video tampering, network disconnected, IP address conflicted, motion, various AI functions, sudden audio increase-decrease
Event Action:	Send e-mail, trigger alarm output, push notification for GSVM App and C-WERK, upload to FTP/Cloud, trigger HDD recording and/or image capture, show message on screen, PTZ linkage, voice prompt, buzzer

**Approvals**

Protection Rating:	IP67 (IEC 60529-2013), NEMA 4X (NEMA 250-2018)
Regulation:	CE, FCC, RoHS Compliant
Standard:	ONVIF (Profile S, Profile G, Profile T, Profile M), SDK/API
MTBF at 25° C:	>60.000 hours

**Environmental**

Operating Temperature:	-35 °C ~ 60 °C (-31 °F ~ 140 °F)
Humidity:	Less than 90%, non condensing

**Electrical**

Supply Voltage:	12 VDC, PoE (IEEE 802.3af)
Power Consumption:	Max. 8.7 W

**Mechanical**

Mount:	Pan: 0° to 360°, tilt: 0° to 90°, rotation: 0° to 360°, 3-Axis Adjustment
Dimensions:	Ø 135 x 105mm (Ø5.3 × 4.1 inch)
Weight:	870 g (1.92 lb)

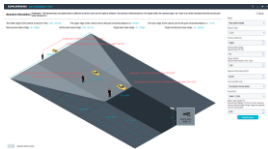
**Packaging**

Package Dimensions:	180 x 180 x 150 mm (7.1 x 7.1 x 5.9 inch)
Package Weight:	1100 g (2.4 lbs)

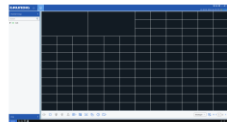
## Packaging

Packaging Unit:	8
Bulk Package Dimensions:	375 x 375 x 320 mm (14.8 x 14.8 x 12.6 inch)
Bulk Package Weight:	9500 g (20.9 lbs)

## Accessories



GU-SW-INST-TOOL



GU-SW-VMS



GU-SW-IP-FINDER



GU-SW-PLAYER



GD-HW-SD-128GB



GD-HW-SD-256GB



GU-BR-AJX03



GU-BR-AJX04

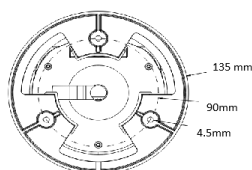
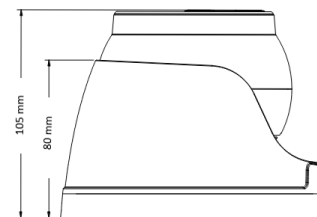
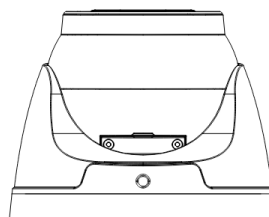
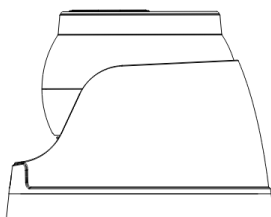


GU-BR-AJX05



GU-BR-AMW05

## Dimensions



## **Guarantee**

---

All cameras in the “SMART”, “PRO” and “PREMIUM” product lines have an extended warranty period of 5 years on electronic parts, mechanical wear and tear on moving parts is not included. Please note our general delivery terms and conditions.

## **NEMA 4X – Protection Standard for Demanding Environments**

---

NEMA 4X is a protection standard defined by the American National Electrical Manufacturers Association, specifying requirements for enclosures housing electrical equipment. Compared to NEMA 4, NEMA 4X additionally provides corrosion resistance – a critical advantage in tunnels, car parks, coastal locations, industrial facilities with chemical exposure, and anywhere subject to regular high-pressure cleaning.

The standard covers protection against rain, snow, dust, corrosion, and inadvertent contact with live electrical components. Combined with IP66/IP67, NEMA 4X-rated cameras offer the highest level of protection for permanent outdoor deployment in the most demanding conditions.