



Type: Turret - IP - Camera

Item Code: GU-CI-AC4614E

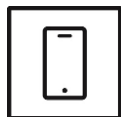
EAN CODE: 4260573065288

SMART

The SMART product line offers comprehensive coverage of modern video systems with advanced AI analysis and solutions for various application areas.

Highlights

Smartphone App



The mobile application was developed to facilitate operators in effectively controlling and managing video systems remotely, at any time. It allows for live image viewing, playback of recorded video data, and receipt of remote notifications.

Object Classification



This technology employs a highly advanced deep learning algorithm that can discern whether the alarm was triggered by a human, a vehicle or some other object.

Smart Eco Line

The SMART ECO product line from GRUNDIG Security offers reliable and modern surveillance solutions. In addition to the usual reliability, these innovative cameras feature advanced image analysis functions supported by Artificial Intelligence (AI). This effectively reduces false alarms by classifying objects as 'Vehicle', 'Person', or 'Other', enabling optimal resource utilization. SMART ECO cameras are user-friendly and can be installed easily. Their robust metal casing provides extra protection against vandalism. These products combine an excellent price-performance ratio and are ideally suited for a wide range of applications in small businesses.

Features

- Reduction of unwanted alarms (false alarms) by classifying target objects using deep learning algorithms. This significantly reduces false alarms generated by objects other than people or vehicles. This makes finding events easier and saves hard drive capacity
- Smart Illumination with White Light and IR Light
- Built-in microphone
- Support Dual Power PoE/DC12V

NDAA compliant

GRUNDIG Security's SMART line is fully compliant with the National Defense Authorization Act (NDAA), which prohibits U.S. federal agencies and their partners from using video surveillance and telecommunications equipment or services from certain Chinese companies. This law is part of the John S. McCain NDAA and is effective August 2020.

With our SMART product line, you can be confident that your security system complies with this important regulation. Our products meet the highest standards of quality and reliability, providing you with the security you need to protect your assets and personnel.

Specifications GU-CI-AC4614E**Camera**

Image Sensor:	1/3" progressive Scan CMOS
Video Resolution:	2560 x 1440
Sensitivity Colour:	0.004 Lux @ F1.6 (AGC ON)
Sensitivity B/W:	0 Lux LED IR on
Shutter Speed:	1/5 ~ 1/20000 s
Slow Shutter:	Support
White Balance:	Auto, Manual

Lens

Lens Focal Length:	2.8 mm
Iris F-Number:	F1.6
Lens Drive Type:	Fixed Iris
Field of View:	96° (horizontal), 52° (vertical), 113° (diagonal)

Illuminator

Max. IR Distance:	Up to 25 m
White Light Distance:	Up to 20 m

Video

Col/B&W:	Auto, Color, Removable IR-Cut Filter (ICR)
Wide Dynamic Range:	Digital WDR
Image Enhancement:	3D DNR
Image Settings:	Rotate mode, Saturation, Brightness, Contrast, Sharpness and white balance adjustable by client software or web browser
Day/Night Switch:	Support auto, scheduled, day, night

Frame Rate

Main Stream:	50 Hz: 25 fps (2560 x 1440) 60 Hz: 25 fps (2560 x 1440)
Sub- Stream:	50 Hz: 25 fps (640 x 480) 60 Hz: 25 fps (640 x 480)

Network

Functions:	Anti-flicker, heartbeat, mirror, password protection, privacy mask, watermark
Video Compression:	H.264, H.265
Bit Rate:	512 Kbps ~ 4 Mbps
SD Memory:	Built-in Micro SD, SDHC, SDXC slot from 32 up to 256 GB
Network Protocol:	TCP/IP, HTTP, HTTPS, DHCP, DNS, DDNS, RTP, RTSP, SMTP, IPv4, NTP
Cyber Security:	Password protection, complicated password, watermark, basic and digest authentication for HTTP, WSSE and digest authentication for Open Network Video Interface, security audit log, host authentication (MAC-address)

I/O Interface

Audio Input/Output:	Built-in microphone
Network Interface:	1x 10, 100 Base T (Ethernet), TX (RJ-45)

Intelligent Functions

Motion Detection:	On, Off, Area Setting, Sensitivity
People & Vehicle Detection:	Adjustable whether people, motorized or non-motorized vehicles should be detected.
Intrusion Detection:	People, motorized vehicles or non-motorized vehicles, enter, exit or drive over a predefined virtual area, up to 4 rules are supported
Line Crossing:	Cross a pre-defined virtual line with target classification Pedestrian, Motor vehicle and non-motorized Vehicle. 4 different rules can be configured.
Region Entrance:	Enter a pre-defined virtual region from the outside place
Region Exiting:	Exit from a pre-defined virtual region
Limits of intelligent functions:	Only one of the AI functions can be selected at a time
Event Source:	Video tampering, network disconnected, IP address conflicted, motion, various AI functions, sudden audio increase-decrease
Event Action:	Send E-mail, trigger alarm output, notify surveillance C-WERK, upload to FTP/NAS, trigger SD-card recording and/or image capture.

Approvals

Protection Rating:	IP67 (IEC 60529-2013)
Regulation:	CE, EAC, FCC, RoHS Compliant
Standard:	ONVIF, SDK/API

Environmental

Operating Temperature:	-35 °C ~ 60 °C (-31 °F ~ 140 °F)
Humidity:	Less than 90%, non condensing

Electrical

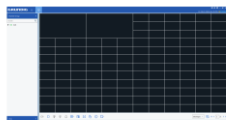
Supply Voltage:	12 VDC, PoE (IEEE 802.3af)
Power Consumption:	Max. 5.5 W

Mechanical

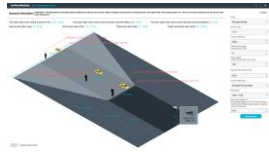
Material:	Aluminium alloy
Mount:	Pan: 0° to 360°, tilt: 0° to 90°, rotation: 0° to 360°, 3-Axis Adjustment
Dimensions:	Ø 71 x 151 mm (Ø 2.8 x 5.9 inch)
Weight:	400 g (0.88 lb)

Packaging

Package Dimensions:	110 x 110 x 105 mm (4.3 x 4.3 x 4.1 inch)
Package Weight:	500 g (1.1 lbs)
Packaging Unit:	30
Bulk Package Dimensions:	445 x 335 x 270 mm (17.5 x 13.2 x 10.6 inch)
Bulk Package Weight:	15000 g (33.1 lbs)

Accessories

GU-SW-VMS



GU-SW-INST-TOOL



GU-SW-IP-FINDER



GU-SW-PLAYER



GD-HW-SD-128GB



GD-HW-SD-256GB



GU-BR-AJX01



GU-BR-AJX02



GU-BR-AJX03



GU-BR-AJX04

Smart Eco Line Guarantee

All cameras in the SMART Eco Line have an extended warranty period of 3 years on electronic parts, mechanical wear and tear on moving parts is not included. Please note our general delivery terms and conditions.