



Type: Fixed Dome - Thermal Imaging - Camera

Item Code: GD-TI-BP1603V

EAN CODE: 4260573063215

PROFESSIONAL

The PROFESSIONAL product line comprehensively covers modern video systems and offers versatile solutions for various areas of application.

Highlights

Object Classification



This technology employs a highly advanced deep learning algorithm that can discern whether the alarm was triggered by a human, a vehicle or some other object.

Features

- Dual Streaming with 1 infrared channel and 1 optical channel
- IP 66 Certification
- Audio Communication & Alarm Input / Output
- Picture in Picture - Partial image of infrared channel on the full image of optical channel

Specifications GD-TI-BP1603V

Thermal module

Thermal Sensor:	Vanadium Oxide Uncooled Focal Plane Array
Resolution (Thermal):	160 x 120
IFOV:	5.48 mrad
NETD:	< 40 mk (@25° C, F=1.0)
Response Waveband:	8 µm to 14 µm
Detector Pitch:	17 µm
Focal Length (IR):	3.1 mm
Viewing Angle (IR):	50° x 37.2° (HxV)
MOD (Min. Object Distance):	0.2 m

Camera

Image Sensor:	1/2.7" progressive Scan CMOS
Video Resolution:	2688 x 1520
Sensitivity Colour:	0.0176 Lux @ F2.25 (AGC ON)
Sensitivity B/W:	0.0035 Lux @ F2.25, (AGC ON)
Shutter Speed:	1 ~ 1/100,000 s

Lens

Lens Focal Length:	4 mm
Field of View:	84° x 44.8° (HxV)

Illuminator

Max. IR Distance:	Up to 15m
White Light Distance:	Up to 30 m
White LED:	Alarm/ Off

Video

Wide Dynamic Range:	120 dB
Day/Night Switch:	Color, BW, Auto

Audio

Audio Compression:	G722.1/G711ulaw/G711alaw/G726/MP2L2/PCM
--------------------	---

General

Measurement option:	Support 3 temperature measurement rule types, 21 rules (10 points, 10 regions and 1 line)
Object Temperature Range:	- 20°C to 150°C
Accuracy:	± 8°C
DRI Range:	Detection Range, Vehicles 1.4 m x 4.0 m: 280 m Detection Range, Humans 1.8 m x 0.5 m: 91 m Recognition Range, Vehicles 1.4 m x 4.0 m: 70 m Recognition Range, Humans 1.8 m x 0.5 m: 23 m Identification Range, Vehicles 1.4 m x 4.0 m: 35 m Identification Range, Humans 1.8 m x 0.5 m: 11 m
Smart Function Range:	VCA Range, Vehicles 1.4 m x 4.0 m: 43 m VCA Range, Humans 1.8 m x 0.5 m: 15 m Temperature Measurement, Object 2 x 2 m: 66 m Temperature Measurement, Object 1 x 1 m: 33 m

Frame Rate

Main Stream:	Thermal: 25 fps (1280 × 720, 704 × 576, 640 × 480, 352 × 288, 320 × 240) Optical: 50 Hz: 25 fps (2688 × 1520, 1920 × 1080, 1280 × 720) 60 Hz: 30 fps (2688 × 1520, 1920 × 1080, 1280 × 720)
Sub- Stream:	Thermal: 25 fps (704 × 576, 352 × 288, 320 × 240) Optical: 50 Hz: 25 fps (704 × 576, 352 × 288) 60 Hz: 30 fps (704 × 480, 352 × 240)

Network

Video Compression:	H.264, H.265, MJPEG
SD Memory:	Micro SD/SDHC/SDXC card slot with ANR (up to 256G), NAS (Support NFS, SMB/CIFS)
Client software:	C-WERK Viewer, SCMS, IOS App, Android App (SCMS)
Web Browser:	Plug-in required live view: IE10/IE11 Non Plug-in live view: Chrome 57+, Mozilla Firefox 52+ Local Service: Chrome 57+, Firefox 52+
Network Protocol:	TCP/IP, IPv4, ICMP, HTTP, HTTPS, FTP, DHCP, DNS, DDNS, RTP, RTSP, RTCP, NTP, UPnP, SMTP, IGMP, 802.1X, QoS, IPv6, Bonjour, UDP, PPPoE, SNMP
Cyber Security:	3 levels of user management: admin, operator, user, AES Encryption for Password Protection, Complicated Password, HTTPS (SSL) Login Authentication, Basic and digest authentication for HTTP/HTTPS, 802.1X authentication (EAP-TLS), 802.1X authentication (EAP-MD5), Watermark, IP Address Filter, WSSE and digest authentication for ONVIF, RTP/RTSP over HTTPS, Control timeout settings, Security audit log, SNMP V2, SNMP V3, TLS 1.1, TLS 1.2, TLS 1.2 with updated cipher suites including AES 256 encryption. Brute Force Delay Protection, Signed Firmware, Secure Boot by software check

I/O Interface

Audio Input/Output:	1-ch audio input and 1-ch audio output
Alarm Input/Output:	1, 1
Network Interface:	1x 10, 100 Base T, TX PoE (RJ-45)
Serial Interface(s):	1x RS-485

Intelligent Functions

Intrusion Detection:	Enter and loiter in a pre-defined virtual region
Line Crossing:	Cross a pre-defined virtual line
Region Entrance:	Enter a pre-defined virtual region from the outside place
Region Exiting:	Exit from a pre-defined virtual region
Event Source:	Sudden Audio loss, network disconnected, IP address conflicted, HDD full, HDD error, illegal login, alarm input, line crossing, intrusion, human & vehicle target classification
Event Action:	Recording: Pre-event, post-event memory card and/or network storage. Picture upload: FTP, HTTP and NAS. Trigger E-mail notification: HTTP, ISAPI. Audio alarm, white light alarm, alarm output and notification to C-WERK VMS. Events are depending on schedule settings.

Approvals

Protection Rating:	IP66 (IEC 60529-2013)
Standard:	ONVIF (Profile S, Profile G, Profile T), SDK/API

Environmental

Operating Temperature:	-40 °C ~ 65 °C (-40 °F ~ 149 °F)
Humidity:	Less than 95%, non condensing

Electrical

Surge Protection:	TVS 6000V Lightning Protection, Surge Protection and Voltage Transient Protection
Supply Voltage:	12 VDC, PoE (IEEE 802.3af)
Power Consumption:	Max. 6 W

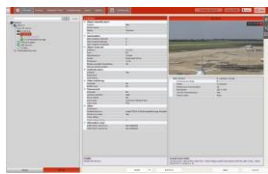
Mechanical

Dimensions:	Ø 138 × 121 mm (Ø 5.45 × 4.85 inch)
Weight:	955 g (2.11 lb)

Packaging

Package Dimensions:	250 x 225 x 145 mm (9.8 x 8.9 x 5.7 inch)
Package Weight:	1400 g (3.1 lbs)
Packaging Unit:	12
Bulk Package Dimensions:	535 x 484 x 480 mm (21.1 x 19.1 x 18.9 inch)
Bulk Package Weight:	17300 g (38.1 lbs)

Accessories



GD-CW-VIEWER



GD-CW-FINDER



GD-SW-SCMS



GD-HW-SD-128GB



GD-HW-SD-256GB



GD-BR-AJX01



GD-BR-AMP15



GD-BR-AMW16



GD-BR-AWJ06

Guarantee

All cameras in the “SMART”, “PRO” and “PREMIUM” product lines have an extended warranty period of 5 years on electronic parts, mechanical wear and tear on moving parts is not included. Please note our general delivery terms and conditions.