



Type: Bullet - Thermal Imaging - Camera

Item Code: GD-TI-AT3607T

EAN CODE: 4260573064182

PREMIUM

The PREMIUM product line offers versatile solutions with unique and unparalleled features.

Highlights

Object Classification



This technology employs a highly advanced deep learning algorithm that can discern whether the alarm was triggered by a human, a vehicle or some other object.

Features

- Temperature exception alarm for fire prevention & fire detection algorithm
- SD/SDHC/SDXC memory card slot for alarm and schedule image recording
- 3 Axis Gimbal for wall and ceiling mount
- Perimeter protection: Filtering out unwanted alarms caused by leaf, light, animal etc.
- Audio Communication & Alarm Input / Output
- Support Dual Power PoE/DC12V

Specifications GD-TI-AT3607T

Thermal module

Thermal Sensor:	Vanadium Oxide Uncooled Focal Plane Array
Resolution (Thermal):	640 x 512
IFOV:	2.62 mrad
NETD:	< 35 mk (@25° C, F=1.0)
Response Waveband:	8 µm to 14 µm
Detector Pitch:	17 µm
Focal Length (IR):	6.5 mm
Viewing Angle (IR):	88,5° x 73,2° (HxV)
MOD (Min. Object Distance):	0.6 m

General

Fire Detection:	Dynamic fire detection, up to 10 fire points detectable
Measurement option:	Support 3 temperature measurement rule types, 21 rules (10 points, 10 regions and 1 line)
Object Temperature Range:	- 20°C to 150°C
Accuracy:	± 8°C
DRI Range:	Detection Range, Vehicles 1.4 m x 4.0 m: 631 m Detection Range, Humans 1.8 m x 0.5 m: 206 m Recognition Range, Vehicles 1.4 m x 4.0 m: 158 m Recognition Range, Humans 1.8 m x 0.5 m: 51 m Identification Range, Vehicles 1.4 m x 4.0 m: 79 m Identification Range, Humans 1.8 m x 0.5 m: 26 m
Smart Function Range:	VCA Range, Vehicles 1.4 m x 4.0 m: 134 m VCA Range, Humans 1.8 m x 0.5 m: 48 m Temperature Measurement, Object 2 x 2 m: 164 m Temperature Measurement, Object 1 x 1 m: 83 m Fire Detection, Object 1 x 1 m: 206 m
Accessories included:	Junction box

Frame Rate

Main Stream:	50 Hz: 25 fps (1280 x 720, 704 x 576, 640 x 512, 352 x 288)
Sub- Stream:	50 Hz: 25 fps (704 x 576, 640 x 512, 352 x 288)
3rd Stream:	50 Hz: 25 fps (1280 x 720, 704 x 576, 640 x 512, 352 x 288)

Network

Number of Clients:	Up to 32 and 20 simultaneously
Video Compression:	H.264, H.264+, H.265, H.265+, MJPEG
SD Memory:	Micro SD/SDHC/SDXC card slot with ANR (up to 256G), NAS (Support NFS, SMB/CIFS)
Client software:	C-WERK Viewer, SCMS, IOS App, Android App (SCMS)
Web Browser:	Plug-in required live view: Internet Explorer 11 Non Plug-in live view and service: Chrome 57.0+, Mozilla Firefox 52+
Network Protocol:	TCP/IP, IPv4/IPv6, ICMP, HTTP, HTTPS, FTP, DHCP, DNS, DDNS, RTP, RTSP, RTCP, NTP, UPnP, SMTP, IGMP, 802.1X, QoS, UDP, PPPoE, SNMP
Cyber Security:	3 levels of user management: admin, operator, user, AES Encryption for Password Protection, Complicated Password, HTTPS (SSL) Login Authentication, Basic and digest authentication for HTTP/HTTPS, 802.1X authentication (EAP-MD5), Watermark, IP Address Filter, WSSE and digest authentication for ONVIF, SNMP V2, SNMP V3, TLS 1.1, TLS 1.2, TLS 1.2 with updated cipher suites including AES 256 encryption. Brute Force Delay Protection, Signed Firmware, Secure Boot by software check

I/O Interface

Audio Input/Output:	1-ch audio input and 1-ch audio output
Alarm Input/Output:	2, 2
Network Interface:	1x 10, 100 Base T, TX PoE+ (RJ-45)
Serial Interface(s):	1x RS-485

Intelligent Functions

Motion Detection:	On, Off, Area Setting
Intrusion Detection:	Enter and loiter in a pre-defined virtual region
Line Crossing:	Cross a pre-defined virtual line
Region Entrance:	Enter a pre-defined virtual region from the outside place
Region Exiting:	Exit from a pre-defined virtual region
Event Source:	Video tampering, network disconnected, IP address conflicted, HDD full, HDD error, illegal login, motion detection
Event Action:	Send E-mail, trigger alarm output, notify surveillance C-WERK, upload to FTP/NAS, trigger SD-card recording and/or image capture.

Approvals

Protection Rating:	IP66 (IEC 60529-2013), IK10 (IEC 62262:2002), (excluding lens glass)
Regulation:	CE, EAC, FCC, RoHS Compliant
Standard:	ONVIF (Profile S, Profile G), SDK/API

Environmental

Operating Temperature:	-40 °C ~ 65 °C (-40 °F ~ 149 °F)
Humidity:	Less than 95%, non condensing

Electrical

Surge Protection:	TVS 6000V Lightning Protection, Surge Protection and Voltage Transient Protection
Supply Voltage:	12 VDC, PoE (IEEE 802.3af)
Power Consumption:	Max. 5 W

Mechanical

Dimensions:	358 × 114 × 115 mm (14.1 × 4.47 × 4.53 inch)
Weight:	1780 g (3.9 lb)

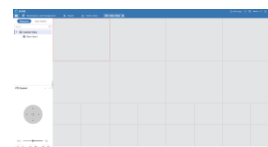
Accessories



GD-CW-VIEWER



GD-CW-FINDER



GD-SW-SCMS



GD-HW-SD-128GB



GD-HW-SD-256GB



GD-BR-AMC03



GD-BR-AML01



GD-BR-AML01AC

Guarantee

All cameras in the "SMART", "PRO" and "PREMIUM" product lines have an extended warranty period of 5 years on electronic parts, mechanical wear and tear on moving parts is not included. Please note our general delivery terms and conditions.