

16 Channel Video Recorder

GD-RN-BP8616P

GRUNDIG



Type: Standalone NVR - IP - Recorder
Item Code: GD-RN-BP8616P
EAN CODE: 4260573064670

PROFESSIONAL

The PROFESSIONAL product line comprehensively covers modern video systems and offers versatile solutions for various areas of application.

Highlights

H.265+



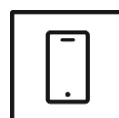
H.265pro+ utilizes the standard H.265/High Efficiency Video Coding (HEVC) format, but boasts advanced technologies that enable it to substantially reduce the necessary transmission bandwidth and storage capacity for maximum efficiency.

Object Classification



This technology employs a highly advanced deep learning algorithm that can discern whether the alarm was triggered by a human, a vehicle or some other object.

Smartphone App



The mobile application was developed to facilitate operators in effectively controlling and managing video systems remotely, at any time. It allows for live image viewing, playback of recorded video data, and receipt of remote notifications.

Features

- Deep Learning - Human and Vehicle Analysis: Self learning human and vehicle classification improves unwanted alarm filtering
- ONVIF protocol support
- 4K video display on main HDMI
- Digital Spot Function to stream the CVBS Spot monitor into network
- Deep Learning - Person comparison: supports the comparison in real time of persons with face picture library. Search target people by picture and name features.
- Built in PoE Switch for direct IP camera connection
- Multiplex (Live/Playback, Recording, Backup, Networking)
- Video recording with NAS System and Local HDD

Specifications GD-RN-BP8616P

Video

IP Inputs: 16 channels

Recording / Playback

Recording Bandwidth: 160 Mbps

Outgoing Bandwidth: 256 Mbps

Recording Resolution: 32 MP, 24 MP, 12 MP, 8 MP, 6 MP, 5 MP, 4 MP, 3 MP, 1080P, UXGA, 720P, VGA, 4CIF, DCIF, 2CIF, CIF, QCIF

* NVR supports up to 4 channels 32 MP & 24 MP IP Video inputs

Recording Mode: Continuous, Event Alarm, Motion, Video Loss, Schedule

Search Mode: Date, Time, Event Alarm, Motion, Search Backup

Playback: Synchronised playback of max. 16 cameras

Playback Resolution: 32 MP, 24 MP, 12 MP, 8 MP, 6 MP, 5 MP, 4 MP, 3 MP, 1080p, UXGA, 720p, VGA, 4CIF, DCIF, 2CIF, CIF, QCIF

Frame Rate(R): Enabled AI : 10-ch @ 4 MP (30fps)
Disabled AI : 16-ch @ 4 MP (30fps)

Audio

Audio Compression: G.711ulaw/G.711alaw/G.722.1/G.726/MP2L2/PCM/AAC

General

External Backup: USB HDD, USB Memory, USB DVD-R, Network

Max. Storage Capacity: Up to 10 TB capacity for each HDD, max 40 TB in total

PoE Specification: 802.3af/at (PSE)

PTZ Control: Pan, Tilt, Zoom, Preset set and call

Basic Internal Storage: No

Network

Video Compression: H.264, H.264+, H.265, H.265+

Web Browser: Plug-in required live view: Internet Explorer 11
Non Plug-in live view and service: Chrome 57.0+, Mozilla Firefox 52+

Network Protocol: TCP/IP, IPv4/IPv6, DHCP, DNS, DDNS, RTSP, SMTP, NTP, SADP, NFS, iSCSI, UPnP™, HTTPS, SNMP, ISUP

Cyber Security: 3 levels of user management: admin, operator, user, AES Encryption for Password Protection, Complicated Password, HTTPS (SSL) Login Authentication, Basic and digest authentication for HTTP/HTTPS, 802.1X authentication, (EAP-LEAP), 802.1X authentication (EAP-TLS), Host authentication (MAC address), IP Address Filter, WSSE and digest authentication for ONVIF, RTP/RTSP over HTTPS, Control timeout settings, Security audit log, SNMP V2, SNMP V3, TLS 1.1, TLS 1.2, TLS 1.2 with updated cipher suites including AES 256 encryption. Centralized Certificate Management, Brute Force Delay Protection, Signed Firmware, Secure Boot by software check, Secure Boot by hardware check

Remote Connections: 128

Streaming Method: Unicast, Multicast

I/O Interface

HDMI Output: HDMI1: 4K (3840 × 2160)/30Hz, 2K (2560 × 1440)/60Hz, 1920 × 1080p/60Hz, 1600 × 1200/60Hz, 1280 × 1024/60Hz, 1280 × 720/60Hz, 1024 × 768/60Hz

HDMI2: 4K (3840 × 2160)/30Hz, 2K (2560 × 1440)/60Hz, 1920 × 1080p/60Hz, 1600 × 1200/60Hz, 1280 × 1024/60Hz, 1280 × 720/60Hz, 1024 × 768/60Hz

VGA Output: 1920 × 1080/60Hz, 1600 × 1200/60Hz, 1280 × 1024/60Hz, 1280 × 720/60Hz, 1024 × 768/60Hz

CVBS Output: 1-ch, BNC (1.0 Vp-p, 75 Ω), resolution: PAL: 704 × 576, NTSC: 704 × 480

I/O Interface

Audio Inputs:	1-ch, RCA (2.0 Vp-p, 1kΩ)
Audio Outputs:	1-ch, RCA
Alarm Inputs:	16 contact input N/O or N/C
Alarm Outputs:	9
Harddisk bay:	4 x SATA III, 1 x eSATA
Network Interface:	1x 10, 100, 1000 Base T, TX (RJ-45)
Power over Ethernet:	16 independent 10, 100 Mbps PoE Ethernet interfaces
PoE Budget:	200 W
Serial Interface(s):	2x RS485 half duplex, 1x RS232
Serial Interface(s):	Front panel: 2 × USB 2.0, Rear panel: 1 × USB 3.0, 2 x RS-485, 1x RS-232

Intelligent Functions

Motion Detection:	Adjustable whether people or motorized vehicles or only movements should be detected. The detection area and sensitivity can also be adjusted. Detection will be generate by NVR in combination with all Grundig Essential, Professional and Premium cameras.
Intrusion Detection:	People, motorized vehicles or non-motorized vehicles, enter, exit or drive over a predefined virtual area, in total for 4 channels.
Face Detection:	Face recognition in real time and instantly match them against a watchlist
Face Recognition:	16 face libraries configurable with up to 50.000 faces in total for 4 ch @8 MP
Event Source:	Motion, Alarm, Video Loss, System
Event Action:	Send E-mail, trigger alarm output, notify surveillance C-WERK, upload to FTP/Cloud, trigger HDD-card recording and/or image capture, Full Screen, show message, Voice Prompt, Buzzer.

Approvals

Regulation:	CE, FCC, RoHS Compliant
Standard:	ONVIF (Profile S, Profile G), SDK/ISAPI

Environmental

Operating Temperature:	-10°C ~ +55°C (+14°F ~ + 131°F)
Humidity:	Less than 90%, non condensing

Electrical

Power Pass Through:	1 x 12 VDC max 1A output 1 x 12 VDC max 0,5 A output controllable. The power will be turned on when the alarm output is triggered (the controllable 12 VDC output is controlled by alarm output 9).
Supply Voltage:	100 ~ 240 VAC, 50Hz / 60Hz
Power Consumption:	≤ 30W without hard disks

Mechanical

Chassis:	19-inch rack-mounted, 1.5U
Dimensions:	440 x 387 x 75 mm (17.3 x 15.24 x 3 inch)
Weight:	3500 g (7,72 lb)

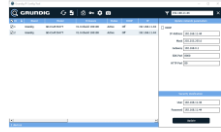
Packaging

Package Dimensions:	502 x 158 x 495 mm (19.8 x 6.2 x 19.5 inch)
Package Weight:	3800 g (8.4 lbs)
Packaging Unit:	2
Bulk Package Dimensions:	523 x 340 x 522 mm (20.6 x 13.4 x 20.6 inch)
Bulk Package Weight:	7500 g (16.5 lbs)

Accessories



GD-CW-VIEWER



GD-CW-FINDER



GD-SW-SCMS



GD-HW-HDD-2TB



GD-HW-HDD-4TB



GD-HW-HDD-6TB



GD-HW-HDD-8TB



GD-KB-AT2430P

Guarantee

All cameras in the “SMART”, “PRO” and “PREMIUM” product lines have an extended warranty period of 5 years on electronic parts, mechanical wear and tear on moving parts is not included. Please note our general delivery terms and conditions.