

# 16 Channel Video Recorder

## GD-RN-BC2416N

# GRUNDIG



Type: Standalone NVR - IP - Recorder

Item Code: GD-RN-BC2416N

EAN CODE: 4260573064762

### ESSENTIAL

Our ESSENTIAL product line is designed to deliver high-quality performance, with basic features and impressive functions, making it perfect for smaller applications.

## Highlights

### H.265+



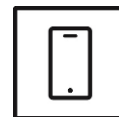
H.265pro+ utilizes the standard H.265/High Efficiency Video Coding (HEVC) format, but boasts advanced technologies that enable it to substantially reduce the necessary transmission bandwidth and storage capacity for maximum efficiency.

### Object Classification



This technology employs a highly advanced deep learning algorithm that can discern whether the alarm was triggered by a human, a vehicle or some other object.

### Smartphone App



The mobile application was developed to facilitate operators in effectively controlling and managing video systems remotely, at any time. It allows for live image viewing, playback of recorded video data, and receipt of remote notifications.

## Essential Line

Many small to medium-sized systems are capable of operating without any specific requirements. Simply storing video sequences is often sufficient in the event of an incident, allowing for the course of events to be determined through recorded footage. GRUNDIG Security provides a comprehensive range of standard applications to meet these needs, including cameras that capture high-resolution images regardless of lighting conditions and recorders capable of storing video sequences for weeks or months, although privacy concerns may prevent this practice. The "Essential" product line offers high image quality, making it ideal for meeting basic requirements.

## Features

- Deep Learning - Human and Vehicle Analysis: Self learning human and vehicle classification improves unwanted alarm filtering
- Multiplex (Live/Playback, Recording, Backup, Networking)
- Controlled locally by USB mouse or remotely through Ethernet connection with CMS, Web page and mobile Apps
- ONVIF protocol support
- Various recording features (Normal, schedule, motion, alarm)

## Specifications GD-RN-BC2416N

## Video

IP Inputs: 16 channels

## Recording / Playback

Recording Bandwidth: 160 Mbps

Outgoing Bandwidth: max. 160 Mbps

Recording Resolution: 12 MP, 8 MP, 6 MP, 5 MP, 4 MP, 3 MP, 1080P, UXGA, 720P, VGA, 4CIF, DCIF, 2CIF, CIF, QCIF

Recording Mode: Continuous, Event Alarm, Motion, Video Loss, Schedule

Search Mode: Date, Time, Event Alarm, Motion, Search Backup, Quick search by object or event type

Playback: Synchronised playback of max. 16 cameras

Frame Rate(R): 2-ch @ 12 MP (30 fps) , 3-ch @ 8 MP (30 fps) , 6-ch @ 4MP (30 fps) , 12-ch @ 1080p (30 fps)

## Audio

Audio Compression: G.711u/a, G.722.1, G.726, AAC

## General

External Backup: USB HDD, USB Memory, DVD-R, Network

Max. Storage Capacity: Up to 10 TB capacity for each HDD

PTZ Control: Pan, Tilt, Zoom, Preset set and call

Basic Internal Storage: No

Accessories included: SATA Cable, Cat Cable, screws for harddisc, Mouse, Remote control (optional)

## Network

Video Compression: H.264, H.264+, H.265, H.265+

Network Protocol: TCP/IP, IPv4/IPv6, DHCP, DNS, DDNS, RTSP, SMTP, NTP, SADP, NFS, iSCSI, UPnP™, HTTPS, SNMP, ISUP

Cyber Security: 3 levels of user management: admin, operator, user, AES Encryption for Password Protection, Complicated Password, HTTPS (SSL) Login Authentication, Basic and digest authentication for HTTP/HTTPS, Host authentication (MAC address), WSSE and digest authentication for ONVIF, Security audit log, SNMP V2 , TLS 1.1, TLS 1.2, TLS 1.2 with updated cipher suites including AES 256 encryption. Brute Force Delay Protection, Signed Firmware, Secure Boot by software check, Secure Boot by hardware check

Remote Connections: 128

Streaming Method: Unicast, Multicast

## I/O Interface

HDMI Output: 4K (3840 × 2160)/30Hz, 2K (2560 × 1440)/60Hz, 1920 × 1080/60Hz, 1600 × 1200/60Hz, 1280 × 1024/60Hz, 1280 × 720/60Hz, 1024 × 768/60Hz

VGA Output: 1920 × 1080/60Hz, 1280 × 1024/60Hz, 1280 × 720/60Hz

Audio Input/Output: 1-ch audio input and 1-ch audio output

Alarm Inputs: 4 contact input N/O or N/C, DC 12V, 1A

Alarm Outputs: 1 x DC 12V, 1A or AC 110V, 0.5A

Harddisk bay: 2 x SATA

Network Interface: 1x 10, 100, 1000 Base T, TX (RJ-45)

Serial Interface(s): Front panel: 1 × USB 2.0 Rear panel: 1 × USB 2.0

## Intelligent Functions

Motion Detection: Adjustable whether people or motorized vehicles or only movements should be detected. The detection area and sensitivity can also be adjusted.

**Intelligent Functions**

|                      |   |
|----------------------|---|
| Intrusion Detection: | People, motorized vehicles or non-motorized vehicles, enter, exit or drive over a predefined virtual area, in total for 2 channels.   |
| Line Crossing:       | Cross a pre-defined virtual line with target classification Pedestrian and or Motor vehicle can be configured for 2 channels.   |
| Region Entrance:     | Enter a pre-defined virtual region from the outside place (* only supported from 2 cameras at same time)  |
| Region Exiting:      | Exit from a pre-defined virtual region (* only supported from 2 cameras at same time)   |
| Face Recognition:    | 16 face libraries configurable with up to 20.000 faces in total for 1 ch @8 MP  |
| Event Source:        | Motion, AI Functions, Video Loss, Network Interruption, Video Tampering, HDD Full, HDD Error, Face Detection and Alarm Inputs   |
| Event Action:        | Send E-mail, trigger alarm output, notify surveillance C-WERK, upload to FTP/Cloud, trigger HDD-card recording and/or image capture, Full Screen, show message, Voice Prompt, Buzzer. |

**Approvals**

|             |   |
|-------------|---|
| Regulation: | CE, FCC, RoHS Compliant                 |
| Standard:   | ONVIF (Profile S, Profile G), SDK/ISAPI |

**Environmental**

|                        |                                 |
|------------------------|---------------------------------|
| Operating Temperature: | -10°C ~ +55°C (+14°F ~ + 131°F) |
| Humidity:              | Less than 90%, non condensing   |

**Electrical**

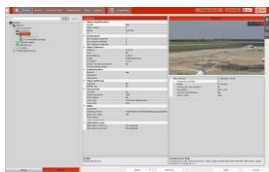
|                    |   |
|--------------------|---|
| Supply Voltage:    | 12 VDC, Power Adapter 100 ~ 240 VAC 50, 60Hz included |
| Power Consumption: | ≤ 15 W without harddisk                               |

**Mechanical**

|             |   |
|-------------|---|
| Dimensions: | 380 × 315 × 52mm (15.2 x 12.4 x 2.0 inch) |
| Weight:     | 1650 g (3.3 lb)                           |

**Packaging**

|                          |  |
|--------------------------|--|
| Package Dimensions:      | 435 x 129 x 387 mm (17.1 x 5.1 x 15.2 inch)  |
| Package Weight:          | 2800 g (6.2 lbs)                             |
| Packaging Unit:          | 4  |
| Bulk Package Dimensions: | 548 x 450 x 412 mm (21.6 x 17.7 x 16.2 inch) |
| Bulk Package Weight:     | 12200 g (26.9 lbs)                           |

**Accessories**

GD-CW-VIEWER



GD-CW-FINDER



GD-SW-SCMS



GD-HW-HDD-2TB



GD-HW-HDD-4TB



GD-HW-HDD-6TB



GD-HW-HDD-8TB



GD-HW-HDD-10TB



GD-KB-AC1420P

## Dimensions

---

