

64 Channel Video Recorder

GD-RN-AT8864N

GRUNDIG



Type: Standalone NVR - IP - Recorder

Item Code: GD-RN-AT8864N

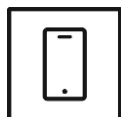
EAN CODE: 4260573060399

PREMIUM

The PREMIUM product line offers versatile solutions with unique and unparalleled features.

Highlights

Smartphone App



The mobile application was developed to facilitate operators in effectively controlling and managing video systems remotely, at any time. It allows for live image viewing, playback of recorded video data, and receipt of remote notifications.

Features

- Hot Spare Mode - working as Failover Server for another NVR
- Supports fisheye camera expansion mode
- 4K video display on main HDMI
- Rack mount 19"
- Digital Spot Function to stream the CVBS Spot monitor into network
- ONVIF protocol support
- Supports a maximum of 12 MP recording resolution
- RAID configuration
- Multiplex (Live/Playback, Recording, Backup, Networking)
- Video recording with NAS System and Local HDD

Specifications GD-RN-AT8864N

Video

IP Inputs: 64 channels

Recording / Playback

Recording Bandwidth: 320Mbps or 200Mbps (when RAID is enabled)
 Outgoing Bandwidth: 256 Mbps or 200 Mbp (when RAID is enabled)
 Recording Resolution: 12 MP, 8 MP, 6 MP, 5 MP, 4 MP, 3 MP, 1080P, UXGA, 720P, VGA, 4CIF, DCIF, 2CIF, CIF, QCIF
 Recording Mode: Continuous, Event Alarm, Motion, Video Loss, Schedule
 Search Mode: Date, Time, Event Alarm, Motion, Search Backup
 Playback: Synchronised playback of max. 16 cameras
 Playback Resolution: 12 MP, 8 MP, 6 MP, 5 MP, 4 MP, 3 MP, 1080p, UXGA, 720p, VGA, 4CIF, DCIF, 2CIF, CIF, QCIF
 Frame Rate(R): 2-ch @ 12 MP (20fps) , 4-ch @ 8 MP (25fps) , 8-ch @ 4MP (30fps) , 16-ch @ 1080p (30fps)

Audio

Audio Compression: G.711

General

External Backup: USB HDD, USB Memory, USB DVD-R, Network
 Max. Storage Capacity: Up to 10 TB capacity for each HDD
 PTZ Control: Pan, Tilt, Zoom, Preset set and call
 Basic Internal Storage: No

Network

Video Compression: H.264, H.264+, H.265, H.265+ , MPEG4
 Cyber Security: 3 levels of user management: admin, operator, user, AES Encryption for Password Protection, Complicated Password, HTTPS (SSL) Login Authentication, Basic and digest authentication for HTTP/HTTPS, 802.1X authentication , (EAP-LEAP), 802.1X authentication (EAP-TLS), Host authentication (MAC address), IP Adress Filter, WSSE and digest authentication for ONVIF, RTP/RTSP over HTTPS, Control timeout settings, Security audit log, SNMP V2 , SNMP V3, TLS 1.1, TLS 1.2, TLS 1.2 with updated cipher suites including AES 256 encryption. Centralized Certificate Management, Brute Force Delay Protection, Signed Firmware, Secure Boot by software check, Secure Boot by hardware check
 Remote Connections: 128
 Streaming Method: Unicast, Multicast

I/O Interface

HDMI Output: HDMI1: 4K (3840 × 2160)/60Hz, 4K (3840 × 2160)/30Hz, 2K (2560 × 1440)/60Hz, 1920 × 1080p/60Hz, 1600 × 1200/60Hz, 1280 × 1024/60Hz, 1280 × 720, 60Hz, 1024 × 768, 60Hz
 HDMI2: 1920 × 1080p/60Hz, 1280 × 1024/60Hz, 1280 × 720/60Hz, 1024 × 768/60Hz
 Audio Inputs: 1-ch, RCA (2.0 Vp-p, 1kΩ)
 Audio Outputs: 2-ch, RCA (2.0Vp-p, 1KΩ)
 Alarm Inputs: 16 contact input N/O or N/C
 Alarm Outputs: 4
 Harddisk bay: 8 x SATA III
 Network Interface: 2x 10, 100, 1000 Base T, TX (RJ-45)
 Serial Interface(s): Front panel: 2 × USB 2.0, Rear panel: 1 × USB 3.0, 1 x RS-485, 1x RS-232

Intelligent Functions

Motion Detection: On, Off, Area Setting

Intelligent Functions

Event Source:	Motion, Alarm, Video Loss, System
Event Action:	Pop-Up, Relay, E-Mail, FTP, Network, Buzzer, PTZ Preset

Approvals

Regulation:	CE, EAC, FCC, RoHS Compliant
Standard:	ONVIF (Profile S, Profile G), SDK/API

Environmental

Operating Temperature:	-10°C ~ +55°C (+14°F ~ + 131°F)
Humidity:	Less than 90%, non condensing

Electrical

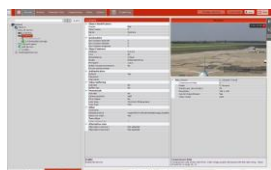
Supply Voltage:	100 ~ 240 VAC, 50Hz / 60Hz
-----------------	----------------------------

Mechanical

Chassis:	19-inch rack-mounted, 2U
Weight:	10000 g (22 lb)

Packaging

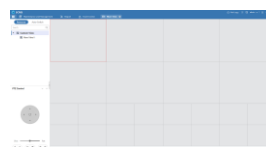
Package Dimensions:	565 x 555 x 210 mm (22.2 x 21.9 x 8.3 inch)
Package Weight:	11500 g (25.4 lbs)
Packaging Unit:	2
Bulk Package Dimensions:	523 x 340 x 522 mm (20.6 x 13.4 x 20.6 inch)
Bulk Package Weight:	24300 g (53.6 lbs)

Accessories

GD-CW-VIEWER



GD-CW-FINDER



GD-SW-SCMS



GD-HW-HDD-2TB



GD-HW-HDD-4TB



GD-HW-HDD-6TB



GD-HW-HDD-8TB

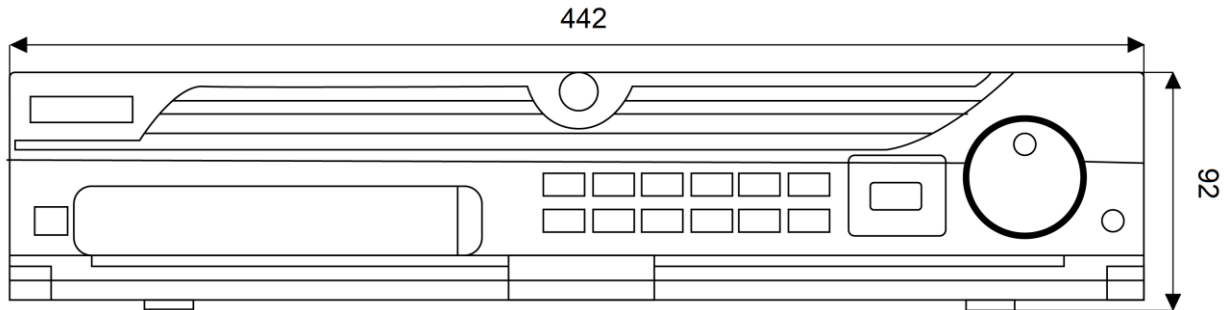


GD-KB-AP1420P



GD-KB-AT2430P

Dimensions



Guarantee

All cameras in the "SMART", "PRO" and "PREMIUM" product lines have an extended warranty period of 5 years on electronic parts, mechanical wear and tear on moving parts is not included. Please note our general delivery terms and conditions.