



Type: Fixed Dome - IP - Camera

Item Code: GD-CI-FC4617V

EAN CODE: 4260573064540

ESSENTIAL

Our ESSENTIAL product line is designed to deliver high-quality performance, with basic features and impressive functions, making it perfect for smaller applications.

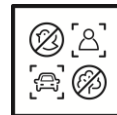
Highlights

H.265+



H.265pro+ utilizes the standard H.265/High Efficiency Video Coding (HEVC) format, but boasts advanced technologies that enable it to substantially reduce the necessary transmission bandwidth and storage capacity for maximum efficiency.

Object Classification



This technology employs a highly advanced deep learning algorithm that can discern whether the alarm was triggered by a human, a vehicle or some other object.

Essential Line

Many small to medium-sized systems are capable of operating without any specific requirements. Simply storing video sequences is often sufficient in the event of an incident, allowing for the course of events to be determined through recorded footage. GRUNDIG Security provides a comprehensive range of standard applications to meet these needs, including cameras that capture high-resolution images regardless of lighting conditions and recorders capable of storing video sequences for weeks or months, although privacy concerns may prevent this practice. The "Essential" product line offers high image quality, making it ideal for meeting basic requirements.

Features

- WDR (Wide Dynamic Range) for extreme backlight situations
- 2-Axis Adjustment
- Support Dual Power PoE/DC12V
- H.265/H.265+, H.264/H.264+ & MJPEG compression modes
- 0 Lux: Integrated LED IR Illuminator viewable distance up to 30m

Specifications GD-CI-FC4617V

Camera

Image Sensor:	1/3" progressive Scan CMOS
Video Resolution:	2560 x 1440
Sensitivity Colour:	0.01 Lux @ F2.0 (AGC ON)
Sensitivity B/W:	0 Lux LED IR on
Shutter Speed:	1/3 ~ 1/100,000 s (Automated Electronic Shutter)
Slow Shutter:	Support
White Balance:	AWB1, Locked WB, Fluorescent lamp, Incandescent lamp, Warm light, Natural light

Lens

Lens Focal Length:	4 mm
Iris F-Number:	F2.0
Lens Mount:	M12
Field of View:	76° (horizontal), 41° (vertical), 90° (diagonal)

Illuminator

Max. IR Distance:	Up to 30 m
Wavelength:	850 nm

Video

Col/B&W:	On, Off, Auto, IR-cut filter removable (ICR)
Wide Dynamic Range:	120 dB
Image Enhancement:	BLC, 3D DNR, HLC
Image Settings:	Rotate mode, Saturation, Brightness, Contrast, Sharpness and white balance adjustable by client software or web browser
Day/Night Switch:	Support auto, scheduled
Privacy zones:	4 zones, rectangle

General

DRI Range:	Detection Range: 79 m Recognition Range: 15 m Identification Range: 7 m
------------	---

Frame Rate

Main Stream:	50 Hz: 20 fps (2560 × 1440) 25 fps (1920 × 1080, 1280 × 720) 60 Hz: 20 fps (2560 × 1440) 30 fps (1920 × 1080, 1280 × 720)
Sub- Stream:	50 Hz: 25 fps (1280 × 720, 640 × 480, 640 × 360) 60 Hz: 30 fps (1280 × 720, 640 × 480, 640 × 360)

Network

Functions:	Anti-flicker, heartbeat, mirror, password protection, privacy mask, watermark
Video Compression:	Main Stream: H.264, H.264+, H.265, H.265+ Sub-Stream: H.264, H.265, MJPEG
Region of Interest:	Support 1 fixed region
H.264 code profile:	Baseline Profile / Main Profile / High Profile
Bit Rate:	32Kbps ~ 8Mbps, adjustable
Network Protocol:	TCP/IP, ICMP, HTTP, FTP, DHCP, DNS, RTP, RTSP, NTP, SMTP, QoS, UDP, IPv6, IGMP

Network

Cyber Security:	Password protection, complicated password, watermark, basic and digest authentication for HTTP, WSSE and digest authentication for Open Network Video Interface, security audit log, host authentication (MAC-address)
-----------------	--

I/O Interface

Network Interface:	1x 10, 100 Base T, TX PoE (RJ-45)
--------------------	-----------------------------------

Intelligent Functions

Intrusion Detection:	Motion detection with human and vehicle detection
Event Source:	Video tampering, network disconnected, IP address conflicted

Approvals

Protection Rating:	IP67 (IEC 60529-2013), IK10 (IEC 62262:2002)
Regulation:	CE, EAC, FCC, RoHS Compliant
Standard:	ONVIF (Profile S, Profile T), SDK/API

Environmental

Operating Temperature:	-30 °C ~ 60 °C (-22 °F ~ 140 °F)
Humidity:	Less than 95%, non condensing

Electrical

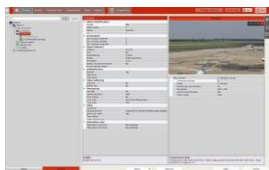
Supply Voltage:	12 VDC, PoE (IEEE 802.3af)
Power Consumption:	Max. 6.5 W

Mechanical

Mount:	Pan: 0° to 355°, tilt: 0° to 75°, 2-Axis Adjustment
Dimensions:	∅ 111 × 85mm (∅ 4.4 × 3.3 inch)
Weight:	520 g (1.15 lb)

Packaging

Package Dimensions:	134 x 134 x 108 mm (5.3 x 5.3 x 4.3 inch)
Package Weight:	600 g (1.3 lbs)
Packaging Unit:	24
Bulk Package Dimensions:	568 x 345 x 288 mm (22.4 x 13.6 x 11.3 inch)
Bulk Package Weight:	14900 g (32.8 lbs)

Accessories

GD-CW-VIEWER



GD-CW-FINDER



GD-SW-SCMS



GD-HW-SD-128GB



GD-HW-SD-256GB



GD-BR-AJX03



GD-BR-AMP09



GD-BR-AMW05



GD-BR-ASN01



GD-BR-AWJ02

Dimensions

