



Type: Bullet - IP - Camera  
Item Code: GD-CI-ET4537TH  
EAN CODE: 4260573064953

**PREMIUM**

The PREMIUM product line offers versatile solutions with unique and unparalleled features.

**Highlights**

**Ultra Low Light**



Designed for unparalleled performance in low-light environments, this camera incorporates advanced image processing and a high-capacity image sensor, ensuring exceptional image quality even in ultra-low light conditions.

**H.265+**



H.265pro+ utilizes the standard H.265/High Efficiency Video Coding (HEVC) format, but boasts advanced technologies that enable it to substantially reduce the necessary transmission bandwidth and storage capacity for maximum efficiency.

**Object Classification**



This technology employs a highly advanced deep learning algorithm that can discern whether the alarm was triggered by a human, a vehicle or some other object.

**Features**

- Deep Learning - Human and Vehicle Analysis: Self learning human and vehicle classification improves unwanted alarm filtering
- Motorized Zoom Lens: f = 8 - 32 mm
- Bidirectional Audio Support
- Management platform for 3rd party APPs
- Built in analytics function: Detection of line crossing, intrusion, region entrance, region exit, object removal, unattended baggage, face and scene change included
- H.265/H.265+, H.264/H.264+ & MJPEG compression modes
- 0 Lux: Integrated LED IR Illuminator viewable distance up to 80m

## Specifications GD-CI-ET4537TH

## Camera

Image Sensor:	1/1.8" progressive Scan CMOS
Video Resolution:	2688 × 1520
Sensitivity Colour:	0.0014 Lux @ F1.4 (AGC ON)
Sensitivity B/W:	0 Lux LED IR on
Shutter Speed:	1/3 ~ 1/100,000 s (Automated Electronic Shutter)
Slow Shutter:	Support
White Balance:	Manual, AWB1, AWB2, Locked WB, Fluorescent lamp, Incandescent lamp, Warm light, Natural light

## Lens

Lens Focal Length:	8 ~ 32 mm motorized, autofocus
Iris F-Number:	F1.4
Lens Drive Type:	P-Iris
Field of View:	42.5° ~ 15.1° (horizontal), 23.3° ~ 8.64° (vertical), 49.6° ~ 17.3° (diagonal)

## Illuminator

Max. IR Distance:	Up to 80 m
-------------------	------------

## Video

Col/B&W:	On, Off, Auto, IR-cut filter removable (ICR)
Wide Dynamic Range:	140 dB
Image Enhancement:	BLC, 3D DNR, Defog, HLC
Image Settings:	Rotate mode, Saturation, Brightness, Contrast, Sharpness and white balance adjustable by client software or web browser
Day/Night Switch:	Support auto, scheduled, day, night
Privacy zones:	8 zones, rectangle, blackened or mosaic

## Audio

Audio Compression:	G.711ulaw/G.711alaw/G.722.1/G.726/MP2L2/PCM/MP3/AAC
Audio Bit Rate:	64 Kbps (G.711ulaw/G.711alaw)/16 Kbps (G.722.1)/16 Kbps (G.726)/16 Kbps to 64 Kbps (AAC)/32 to 192 Kbps (MP2L2)/8 to 320 Kbps (MP3)
Environment Noise Filtering:	yes
Audio Detection:	Sudden audio increase, decrease

## Frame Rate

Main Stream:	50 Hz: 25 fps (2688 × 1520, 1920 × 1080, 1280 × 720) 60 Hz: 30 fps (2688 × 1520, 1920 × 1080, 1280 × 720)
Sub- Stream:	50 Hz: 25 fps (1280 × 720, 640 × 480, 640 × 360) 60 Hz: 30 fps (1280 × 720, 640 × 480, 640 × 360)
3rd Stream:	50 Hz: 10 fps (1920 × 1080, 1280 × 720, 640 × 480, 640 × 360) 60 Hz: 10 fps (1920 × 1080, 1280 × 720, 640 × 480, 640 × 360)
4th Stream:	50 Hz: 10 fps (1280 × 720, 640 × 480, 640 × 360) 60 Hz: 10 fps (1280 × 720, 640 × 480, 640 × 360) * 4th stream is supported under certain settings

## Network

Number of Clients:	Up to 32, 6 simultaneously Live View
Functions:	One-key reset, anti-flicker, four streams, heartbeat, mirror, password protection, privacy mask, IP-address filter, rotate, flash log, white balance, pixel counter

**Network**

Video Compression:	Main Stream: H.264, H.264+, H.265, H.265+ Sub-Stream: H.264, H.265, MJPEG Third Stream: H.264, H.265 Fourth Stream: H.264, H.265, MJPEG
Region of Interest:	5 fixed region for main stream and sub-stream
H.264 code profile:	Baseline Profile / Main Profile / High Profile
Bit Rate:	32Kbps ~ 8Mbps, adjustable
Scalable Video Coding (SVC):	supported
SD Memory:	Micro SD/SDHC/SDXC card slot with ANR (up to 512G), NAS (Support NFS, SMB/CIFS)
Multicasting:	supported
Network Protocol:	TCP/IP, ICMP, HTTP, HTTPS, FTP, SFTP, SRTP, DHCP, DNS, DDNS, RTP, RTSP, RTCP, NTP, UPnP, SMTP, IGMP, 802.1X, QoS, IPv6, Bonjour, UDP, PPPoE, SNMP, SSL/TLS
Cyber Security:	3 levels of user management: admin, operator, user, AES Encryption for Password Protection, Complicated Password, HTTPS (SSL) Login Authentication, Basic and digest authentication for HTTP/HTTPS, 802.1X authentication, (EAP-LEAP), 802.1X authentication (EAP-TLS), 802.1X authentication (EAP-MD5), Watermark, IP Address Filter, WSSE and digest authentication for ONVIF, RTP/RTSP over HTTPS, Control timeout settings, Security audit log, SNMP V2, SNMP V3, TLS 1.1, TLS 1.2, TLS 1.2 with updated cipher suites including AES 256 encryption., Centralized Certificate Management, Brute Force Delay Protection, Signed Firmware, Secure Boot by software check, Secure Boot by hardware check
Streaming:	Four streams * fourth & third stream is supported under certain settings

**I/O Interface**

Audio Input/Output:	1-ch audio input and 1-ch audio output
Alarm Input/Output:	3 inputs, 3 outputs (up to 24 VDC 1 A or 24 VAC 1A)
Network Interface:	1x 10, 100 Base T, TX PoE+ (RJ-45)
Serial Interface(s):	1x RS-485

**Intelligent Functions**

Motion Detection:	Adjustable whether people or motorized vehicles or only movements should be detected. The detection area and sensitivity can also be adjusted.
Intrusion Detection:	Enter and loiter in a pre-defined virtual region, up to 4 pre-defined virtual regions supported
Line Crossing:	Cross a pre-defined virtual line, up to 4 pre-defined virtual lines supported
Region Entrance:	Enter a pre-defined virtual region from the outside place
Region Exiting:	Exit from a pre-defined virtual region
Unattended Baggage:	Objects left over in the pre-defined region such as the baggage, purse, dangerous materials
Object Removal:	Objects removed from the pre-defined region, such as the exhibits on display
Object Counting:	Entrance and Exit of people number is accounted and shown on screen in real time
Face Detection:	Human face appears in the image can be detected and trigger event action
Tamper Protection:	Scene change and defocus
Event Source:	Video tampering, network disconnected, IP address conflicted, HDD full, HDD error, illegal login, motion detection, alarm input, line crossing, intrusion, human & vehicle target classification
Event Action:	Send E-mail, trigger alarm output, notify surveillance C-WERK, upload to FTP/NAS, trigger SD-card recording and/or image capture.

**Approvals**

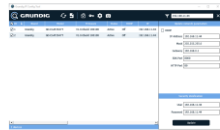
Protection Rating:	IP67 (IEC 60529-2013), IK10 (IEC 62262:2002), NEMA 4X (NEMA 250-2018)
Regulation:	CE, EAC, FCC, RoHS Compliant
Standard:	ONVIF (Profile S, Profile G, Profile T), ISAPI, SDK, ISUP

Environmental	
Operating Temperature:	-40 °C ~ 60 °C (-40 °F ~ 140 °F)
Humidity:	Less than 95%, non condensing
Electrical	
Surge Protection:	TVS 2000V Lightning Protection, Surge Protection and Voltage Transient Protection
Power Pass Through:	12 VDC, 100 mA max.
Supply Voltage:	12 VDC, 24 VAC, PoE (IEEE 802.3at)
Power Consumption:	Max. 17 W
Mechanical	
Mount:	Pan: 0° to 355°, tilt: 0° to 90°, rotation: 0° to 360°
Dimensions:	∅ 105 × 340 mm (∅ 4.1 × 13.4 inch)
Weight:	1450 g (3.2 lb)
Packaging	
Package Dimensions:	385 x 190 x 180 mm (15.2 x 7.5 x 7.1 inch)
Package Weight:	1800 g (4 lbs)
Packaging Unit:	9
Bulk Package Dimensions:	590 x 560 x 410 mm (23.2 x 22 x 16.1 inch)
Bulk Package Weight:	18100 g (39.9 lbs)

**Accessories**



GD-CW-VIEWER



GD-CW-FINDER



GD-SW-SCMS



GD-HW-SD-128GB



GD-HW-SD-256GB



GD-BR-AMC03

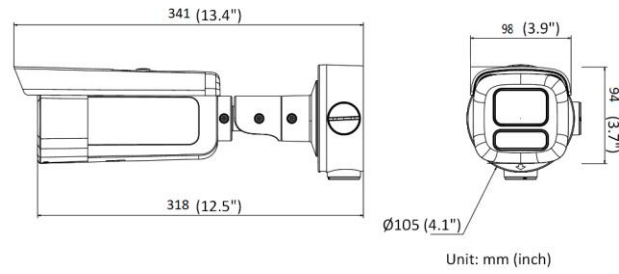


GD-BR-AML01



GD-BR-AML01AC

**Dimensions**



## Guarantee

All cameras in the “SMART”, “PRO” and “PREMIUM” product lines have an extended warranty period of 5 years on electronic parts, mechanical wear and tear on moving parts is not included. Please note our general delivery terms and conditions.