



Type: Bullet - IP - Camera

Item Code: GD-CI-CT2647T

EAN CODE: 4260573061952

PREMIUM

The PREMIUM product line offers versatile solutions with unique and unparalleled features.

Highlights

Ultra Low Light



Designed for unparalleled performance in low-light environments, this camera incorporates advanced image processing and a high-capacity image sensor, ensuring exceptional image quality even in ultra-low light conditions.

Deep Learning



Deep Learning is inspired by the complex structure of the human brain. This innovative method allows processing of information and performing corresponding actions based on analysis.

H.265+



H.265pro+ utilizes the standard H.265/High Efficiency Video Coding (HEVC) format, but boasts advanced technologies that enable it to substantially reduce the necessary transmission bandwidth and storage capacity for maximum efficiency.

Features

- Motorized Zoom Lens: f = 2.8 - 12 mm
- License Plate Recognition (LPR) software included. Data import and export function, blocklist and whitelist or extended analytics functions
- Ultra Low Light CMOS Sensor, Smart-IR Control
- 0 Lux: Integrated LED IR Illuminator viewable distance up to 50m
- H.265/H.265+, H.264/H.264+ & MJPEG compression modes
- A maximum of 10,000 license plates can be added to the blocklist & allowlist
- 3 Axis Gimbal for wall and ceiling mount

Specifications GD-CI-CT2647T

Camera

Image Sensor:	1/1.8" progressive Scan CMOS
Video Resolution:	1920 x 1080
Sensitivity Colour:	0.002 Lux @ F1.2 (AGC ON)
Sensitivity B/W:	0 Lux LED IR on
Shutter Speed:	1 ~ 1/100,000 s
Slow Shutter:	Support
White Balance:	Manual, AWB1, AWB2, Locked WB, Fluorescent lamp, Incandescent lamp, Warm light, Natural light

Lens

Lens Focal Length:	2.8 ~ 12 mm motorized, autofocus
Iris F-Number:	F1.2
Lens Drive Type:	DC Auto Iris
Focus Adjustment:	Auto, Manual, Semi-automatic
Field of View:	103.3° ~ 38.6° (horizontal), 54.2° ~ 21.9° (vertical), 124.2° ~ 44.3° (diagonal)

Illuminator

Max. IR Distance:	Up to 50 m
-------------------	------------

Video

Col/B&W:	On, Off, Auto, IR-cut filter removable (ICR)
Wide Dynamic Range:	140 dB
Image Enhancement:	BLC, 3D DNR, Defog, EIS, HLC
Image Settings:	Rotate mode, Saturation, Brightness, Contrast, Sharpness and white balance adjustable by client software or web browser
Day/Night Switch:	Support auto, scheduled, day, night, triggered by alarm in

General

Max. Distance:	2.5 ~ 12 m
----------------	------------

Frame Rate

Main Stream:	50 Hz: 25 fps (1920 × 1080, 1280 × 960, 1280 × 720) 60 Hz: 30 fps (1920 × 1080, 1280 × 960, 1280 × 720)
Sub- Stream:	50 Hz: 25 fps (704 × 576, 640 × 512) 60 Hz: 30 fps (704 × 576, 640 × 512)
3rd Stream:	50 Hz: 25 fps (1920 × 1080, 1280 × 960, 1280 × 720, 704 × 576, 640 × 480) 60 Hz: 30 fps (1920 × 1080, 1280 × 960, 1280 × 720, 704 × 480, 640 × 480)
4th Stream:	50 Hz: 25 fps (704 × 576, 640 × 480) 60 Hz: 30 fps (704 × 480, 640 × 480)
5th Stream:	50 Hz: 25 fps (704 × 576, 640 × 480) 60 Hz: 30 fps (704 × 480, 640 × 480)
6th Stream:	50 Hz: 25 fps (1920 × 1080, 1280 × 720, 704 × 576, 640 × 480) 60 Hz: 30 fps (1920 × 1080, 1280 × 720, 704 × 480, 640 × 480) *) Listed resolutions are only selectable options. It does not mean that all streams can work at their maximum resolution at the same time.

Network

Functions:	One-key reset, anti-flicker, five plus five streams, heartbeat, mirror, password protection, privacy mask, watermark, IP-address filter
------------	---

Network

Video Compression:	Main Stream: H.264, H.264+, H.265, H.265+ Sub-Stream/ Third Stream/ Fourth Stream/ Fifth Stream/ Costum Stream: H.264, H.265, MJPEG
Region of Interest:	Support four fixed region for main stream, sub stream, third stream, fourth stream and fifth stream and dynamic face tracking
H.264 code profile:	Baseline Profile / Main Profile / High Profile
Bit Rate:	32Kbps ~ 16Mbps, adjustable
Scalable Video Coding (SVC):	supported
SD Memory:	Micro SD/SDHC/SDXC card slot with ANR (up to 256G), NAS (Support NFS, SMB/CIFS)
Network Protocol:	TCP/IP, ICMP, HTTP, HTTPS, FTP, DHCP, DNS, DDNS, RTP, RTSP, RTCP, NTP, UPnP, SNMP, SMTP, IGMP, 802.1X, QoS, IPv4/IPv6, UDP, PPPoE, Bonjour, SRTP, SFTP, SSL/TLS
Cyber Security:	3 levels of user management: admin, operator, user, AES Encryption for Password Protection, Complicated Password, HTTPS (SSL) Login Authentication, Basic and digest authentication for HTTP/HTTPS, 802.1X authentication, (EAP-LEAP), 802.1X authentication (EAP-TLS), 802.1X authentication (EAP-MD5), Watermark, IP Adress Filter, WSSE and digest authentication for ONVIF, RTP/RTSP over HTTPS, Control timeout settings, Security audit log, SNMP V2, SNMP V3, TLS 1.1, TLS 1.2, TLS 1.2 with updated cipher suites including AES 256 encryption., Centralized Certificate Management, Brute Force Delay Protection, Signed Firmware, Secure Boot by software check, Secure Boot by hardware check

I/O Interface

Video Outputs:	1 Test Monitor output (CVBS, 1 Vpp). Adapter cable with female BNC connector included.
Alarm Input/Output:	2 inputs, 2 outputs (up to 24 VDC 1 A or 110 VAC 500mA)
Network Interface:	1x 10, 100, 1000 Base T, TX (RJ-45)

Intelligent Functions

Deep Learning Analytics:	Face Capture, Line crossing detection, intrusion detection, region entrance detection, region exiting detection, human, vehicle
Intrusion Detection:	Motion Detection
License Plate Recognition:	Detects and recognizes car number plates. Data- import- export function, actions can be triggered via the allowed, blocked and other list
Tamper Protection:	Scene change and defocus
Event Source:	Video tampering, network disconnected, IP address conflicted, HDD full, HDD error, illegal login, motion detection

Approvals

Protection Rating:	IP67 (IEC 60529-2013), IK10 (IEC 62262:2002)
Regulation:	CE, EAC, FCC, RoHS Compliant
Standard:	ONVIF (Profile S, Profile G), SDK/API

Environmental

Operating Temperature:	-40 °C ~ 60 °C (-40 °F ~ 140 °F)
Humidity:	Less than 95%, non condensing

Electrical

Supply Voltage:	12 VDC, PoE (IEEE 802.3at)
Power Consumption:	Max. 14.5 W

Mechanical

Mount:	Pan: 0° to 355°, tilt: 0° to 90°, rotation: 0° to 360°
Dimensions:	Ø 145 x 350 mm (Ø 5.7 x 13.7 inch)
Weight:	2175 g (4.8 lb)

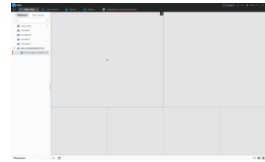
Accessories



GD-CW-VIEWER



GD-CW-FINDER



GD-SW-SCMS



GD-HW-SD-128GB



GD-HW-SD-256GB

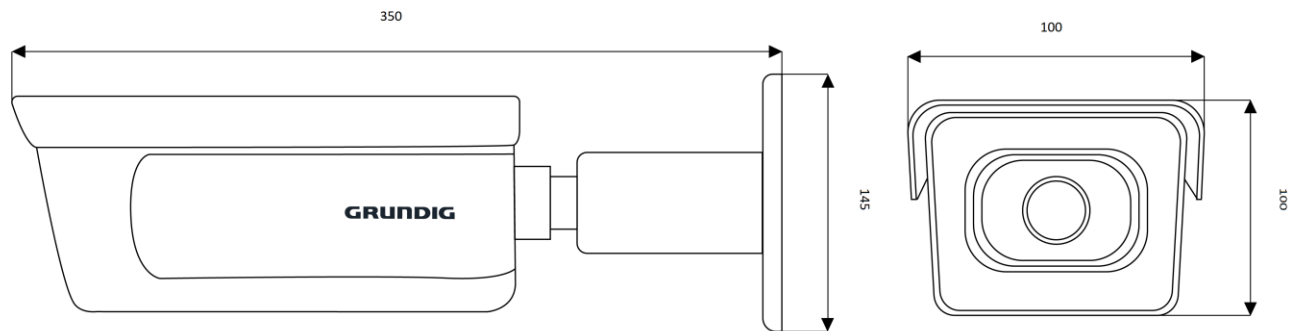


GD-BR-AMC01



GD-BR-AML03

Dimensions



Guarantee

All cameras in the "SMART", "PRO" and "PREMIUM" product lines have an extended warranty period of 5 years on electronic parts, mechanical wear and tear on moving parts is not included. Please note our general delivery terms and conditions.