



Type: Fixed Dome - IP - Camera

Item Code: GD-CI-CC4637V

EAN CODE: 4260573064564

ESSENTIAL

Our ESSENTIAL product line is designed to deliver high-quality performance, with basic features and impressive functions, making it perfect for smaller applications.

Highlights

H.265+



H.265pro+ utilizes the standard H.265/High Efficiency Video Coding (HEVC) format, but boasts advanced technologies that enable it to substantially reduce the necessary transmission bandwidth and storage capacity for maximum efficiency.

Object Classification



This technology employs a highly advanced deep learning algorithm that can discern whether the alarm was triggered by a human, a vehicle or some other object.

Essential Line

Many small to medium-sized systems are capable of operating without any specific requirements. Simply storing video sequences is often sufficient in the event of an incident, allowing for the course of events to be determined through recorded footage. GRUNDIG Security provides a comprehensive range of standard applications to meet these needs, including cameras that capture high-resolution images regardless of lighting conditions and recorders capable of storing video sequences for weeks or months, although privacy concerns may prevent this practice. The "Essential" product line offers high image quality, making it ideal for meeting basic requirements.

Features

- Motorized Varifocal Lens: f = 2.8 - 12 mm
- 3 Axis Gimbal for wall and ceiling mount
- Support Dual Power PoE/DC12V
- H.265/H.265+, H.264/H.264+ & MJPEG compression modes
- 0 Lux: Integrated LED IR Illuminator viewable distance up to 30m

Specifications GD-CI-CC4637V

Camera

Image Sensor:	1/3" progressive Scan CMOS
Video Resolution:	2560 x 1440
Sensitivity Colour:	0.005 Lux @ F1.6 (AGC ON)
Sensitivity B/W:	0 Lux LED IR on
Shutter Speed:	1/3 ~ 1/100,000 s (Automated Electronic Shutter)
Slow Shutter:	Support
White Balance:	AWB1, Locked WB, Fluorescent lamp, Incandescent lamp, Warm light, Natural light

Lens

Lens Focal Length:	2.8 ~ 12 mm motorized, autofocus
Iris F-Number:	F1.6
Lens Mount:	Ø14
Lens Drive Type:	Fixed Iris
Focus Adjustment:	Auto- Focus, Manual - Focus
Field of View:	98° ~ 28° (horizontal), 51° ~ 16° (vertical), 115° ~ 32° (diagonal)

Illuminator

Max. IR Distance:	Up to 30 m
Wavelength:	850 nm

Video

Col/B&W:	On, Off, Auto, IR-cut filter removable (ICR)
Wide Dynamic Range:	120 dB
Image Enhancement:	BLC, 3D DNR, HLC
Image Settings:	Rotate mode, Saturation, Brightness, Contrast, Sharpness, AGC and White Balance adjustable by client software or web browser
Day/Night Switch:	Support auto, scheduled

Frame Rate

Main Stream:	50 Hz: 20 fps (2560 × 1440)
	25 fps (1920 × 1080, 1280 × 720)
	60 Hz: 20 fps (2560 × 1440)
	30 fps (1920 × 1080, 1280 × 720)
Sub- Stream:	50 Hz: 25 fps (1280 × 720, 640 × 480, 640 × 360)
	60 Hz: 30 fps (1280 × 720, 640 × 480, 640 × 360)

Network

Number of Clients:	Up to 6 simultaneously
Functions:	Anti-flicker, mirror, password protection, privacy mask, watermark
Video Compression:	Main Stream: H.264, H.264+, H.265, H.265+ Sub-Stream: H.264, H.265, MJPEG
Region of Interest:	Support 1 fixed region
H.264 code profile:	Baseline Profile / Main Profile / High Profile
Bit Rate:	32Kbps ~ 8Mbps, adjustable
SD Memory:	Micro SD/SDHC/SDXC card slot with ANR (up to 256G), NAS (Support NFS, SMB/CIFS)
Network Protocol:	TCP/IP, ICMP, HTTP, FTP, DHCP, DNS, RTP, RTSP, NTP, SMTP, QoS, UDP, IPv6, IGMP

Network

Cyber Security:	3 levels of user management: admin, operator, user, AES Encryption for Password Protection, Complicated Password, Watermark, WSSE and digest authentication for ONVIF, Brute Force Delay Protection, Signed Firmware, Secure Boot by software check
Streaming Method:	Unicast, Multicast

I/O Interface

Network Interface:	1x 10, 100 Base T, TX PoE (RJ-45)
--------------------	-----------------------------------

Intelligent Functions

Motion Detection:	Adjustable whether people or motorized vehicles or only movements should be detected. The detection area and sensitivity can also be adjusted.
Tamper Protection:	Scene change and defocus
Event Source:	Video tampering, network disconnected, IP address conflicted
Event Action:	Send E-mail, trigger alarm output, notify surveillance C-WERK, upload to FTP/NAS, trigger SD-card recording and/or image capture.

Approvals

Protection Rating:	IP67 (IEC 60529-2013), IK10 (IEC 62262:2002)
Regulation:	CE, EAC, FCC, RoHS Compliant
Standard:	ONVIF (Profile S, Profile G, Profile T), SDK/API

Environmental

Operating Temperature:	-30 °C ~ 60 °C (-22 °F ~ 140 °F)
------------------------	----------------------------------

Electrical

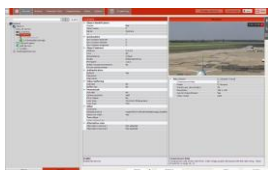
Supply Voltage:	12 VDC, PoE (IEEE 802.3af)
Power Consumption:	Max. 11.5 W

Mechanical

Material:	Metal & Plastic
Mount:	Pan: 0° to 355°, tilt: 0° to 70°, rotate: 0° to 355°, 3-Axis Adjustment
Dimensions:	Ø 141 × 100 mm (Ø 5.6 × 3.9 inch)
Weight:	820 g (1.8 lb)

Packaging

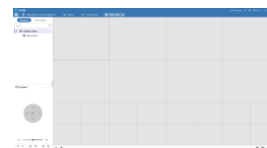
Package Dimensions:	140 x 140 x 154 mm (5.5 x 5.5 x 6.1 inch)
Package Weight:	1200 g (2.6 lbs)
Packaging Unit:	24
Bulk Package Dimensions:	590 x 430 x 340 mm (23.2 x 16.9 x 13.4 inch)
Bulk Package Weight:	24500 g (54 lbs)

Accessories

GD-CW-VIEWER



GD-CW-FINDER



GD-SW-SCMS



GD-HW-SD-128GB



GD-HW-SD-256GB



GD-BR-AJX01



GD-BR-AMF01



GD-BR-AMP08



GD-BR-AMW04



GD-BR-AWJ01

Dimensions

