

4 MP IP-Camera 2.8mm GD-CI-CC4617V

GRUNDIG



Type: Fixed Dome - IP - Camera

Item Code: GD-CI-CC4617V

EAN CODE: 4260573062119

ESSENTIAL

Our ESSENTIAL product line is designed to deliver high-quality performance, with basic features and impressive functions, making it perfect for smaller applications.

Highlights

H.265+



H.265pro+ utilizes the standard H.265/High Efficiency Video Coding (HEVC) format, but boasts advanced technologies that enable it to substantially reduce the necessary transmission bandwidth and storage capacity for maximum efficiency.

Essential Line

Many small to medium-sized systems are capable of operating without any specific requirements. Simply storing video sequences is often sufficient in the event of an incident, allowing for the course of events to be determined through recorded footage. GRUNDIG Security provides a comprehensive range of standard applications to meet these needs, including cameras that capture high-resolution images regardless of lighting conditions and recorders capable of storing video sequences for weeks or months, although privacy concerns may prevent this practice. The "Essential" product line offers high image quality, making it ideal for meeting basic requirements.

Features

- WDR (Wide Dynamic Range) for extreme backlight situations
- 2-Axis Adjustment
- Support Dual Power PoE/DC12V
- H.265/H.265+, H.264/H.264+ & MJPEG compression modes
- 0 Lux: Integrated LED IR Illuminator viewable distance up to 30m

Specifications GD-CI-CC4617V

Camera

Image Sensor:	1/3" progressive Scan CMOS
Video Resolution:	2560 x 1440
Sensitivity Colour:	0.01 Lux @ F1.2 (AGC ON)
Sensitivity B/W:	0 Lux LED IR on
Shutter Speed:	1/3 ~ 1/100,000 s (Automated Electronic Shutter)
Slow Shutter:	Support
White Balance:	AWB1, Locked WB, Fluorescent lamp, Incandescent lamp, Warm light, Natural light

Lens

Lens Focal Length:	2.8 mm
Iris F-Number:	F2.0
Lens Mount:	M12
Field of View:	100° (horizontal), 55° (vertical), 117° (diagonal)

Illuminator

Max. IR Distance:	Up to 30 m
Wavelength:	850 nm

Video

Col/B&W:	On, Off, Auto, IR-cut filter removable (ICR)
Wide Dynamic Range:	120 dB
Image Enhancement:	BLC, 3D DNR
Image Settings:	Saturation, brightness, contrast and sharpness adjustable through client software or web browser
Day/Night Switch:	Support auto, scheduled

Frame Rate

Main Stream:	50 Hz: 20 fps (2560 × 1440) 25 fps (2304 × 1296, 1920 × 1080, 1280 × 720) 60 Hz: 20 fps (2560 × 1440) 30 fps (2304 × 1296, 1920 × 1080, 1280 × 720)
Sub- Stream:	50 Hz: 25 fps (640 × 480, 640 × 360, 320 × 240) 60 Hz: 30 fps (640 × 480, 640 × 360, 320 × 240)

Network

Internal Memory:	128 Mb
Functions:	Anti-flicker, heartbeat, mirror, password protection, privacy mask, watermark, Ip-address filter
Video Compression:	Main Stream: H.264, H.264+, H.265, H.265+ Sub-Stream: H.264, H.265, MJPEG
Region of Interest:	Support 1 fixed region
H.264 code profile:	Baseline Profile / Main Profile / High Profile
Bit Rate:	32Kbps ~ 8Mbps, adjustable
Network memory:	NAS(NFS, SMB/CIFS)
Network Protocol:	TCP/IP, ICMP, HTTP, HTTPS, FTP, DHCP, DNS, DDNS, RTP, RTSP, RTCP, NTP, UPnP, SMTP, IGMP, 802.1X, QoS, IPv6, UDP, Bonjour

4 MP IP-Camera 2.8mm

GD-CI-CC4617V

GRUNDIG

Network

Cyber Security:	3 levels of user management: admin, operator, user, AES Encryption for Password Protection, Complicated Password, HTTPS (SSL) Login Authentication, Basic and digest authentication for HTTP/HTTPS, 802.1X authentication, (EAP-LEAP), 802.1X authentication (EAP-TLS), 802.1X authentication (EAP-MD5), Watermark, IP Address Filter, WSSE and digest authentication for ONVIF, SNMP V2, SNMP V3, TLS 1.0, TLS 1.1, Brute Force Delay Protection, Secure Boot by software check
-----------------	--

I/O Interface

Network Interface:	1x 10, 100 Base T, TX PoE (RJ-45)
--------------------	-----------------------------------

Intelligent Functions

Intrusion Detection:	Motion Detection
Event Source:	Video tampering, network disconnected, IP address conflicted

Approvals

Protection Rating:	IP67 (IEC 60529-2013), IK10 (IEC 62262:2002)
Regulation:	CE, EAC, FCC, RoHS Compliant
Standard:	ONVIF (Profile S, Profile G), SDK/API

Environmental

Operating Temperature:	-40 °C ~ 60 °C (-40 °F ~ 140 °F)
Humidity:	Less than 95%, non condensing

Electrical

Supply Voltage:	12 VDC, PoE (IEEE 802.3af)
Power Consumption:	Max. 5 W

Mechanical

Mount:	Pan: 0° to 355°, tilt: 0° to 75°, 2-Axis Adjustment
Dimensions:	Ø 111 × 83mm (Ø 4.4 × 3.2 inch)
Weight:	400 g (0.88 lb)

Packaging

Package Dimensions:	134 x 134 x 108 mm (5.3 x 5.3 x 4.3 inch)
Package Weight:	600 g (1.3 lbs)
Packaging Unit:	24
Bulk Package Dimensions:	568 x 345 x 288 mm (22.4 x 13.6 x 11.3 inch)
Bulk Package Weight:	14900 g (32.8 lbs)

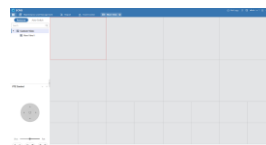
Accessories



GD-CW-VIEWER



GD-CW-FINDER



GD-SW-SCMS



GD-BR-AJX03



GD-BR-AMP09



GD-BR-AMW05



GD-BR-ASN01



GD-BR-AWJ02

Dimensions

