



Type: Fixed Dome - IP - Camera

Item Code: GD-CI-CC2616V

EAN CODE: 4260573062096

## ESSENTIAL

Our ESSENTIAL product line is designed to deliver high-quality performance, with basic features and impressive functions, making it perfect for smaller applications.

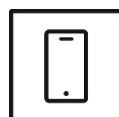
## Highlights

### H.265+



H.265pro+ utilizes the standard H.265/High Efficiency Video Coding (HEVC) format, but boasts advanced technologies that enable it to substantially reduce the necessary transmission bandwidth and storage capacity for maximum efficiency.

### Smartphone App



The mobile application was developed to facilitate operators in effectively controlling and managing video systems remotely, at any time. It allows for live image viewing, playback of recorded video data, and receipt of remote notifications.

## Essential Line

Many small to medium-sized systems are capable of operating without any specific requirements. Simply storing video sequences is often sufficient in the event of an incident, allowing for the course of events to be determined through recorded footage. GRUNDIG Security provides a comprehensive range of standard applications to meet these needs, including cameras that capture high-resolution images regardless of lighting conditions and recorders capable of storing video sequences for weeks or months, although privacy concerns may prevent this practice. The "Essential" product line offers high image quality, making it ideal for meeting basic requirements.

## Features

- 2 Megapixel IP Camera with Full HD 1080P real time video streaming
- H.265/H.265+, H.264/H.264+ & MJPEG compression modes
- 0 Lux: Integrated LED IR Illuminator viewable distance up to 30m
- Lens: f = 2.8 mm
- 2-Axis Adjustment
- Support Dual Power PoE/DC12V

## Specifications GD-CI-CC2616V

### Camera

Image Sensor:	1/2.7" progressive Scan CMOS
Video Resolution:	1920 x 1080
Sensitivity Colour:	0.01 Lux @ F2.0 (AGC ON)
Sensitivity B/W:	0 Lux LED IR on
Shutter Speed:	1/3 ~ 1/100,000 s (Automated Electronic Shutter)
Slow Shutter:	Support
White Balance:	AWB1, Locked WB, Fluorescent lamp, Incandescent lamp, Warm light, Natural light

### Lens

Lens Focal Length:	2.8 mm
Iris F-Number:	F2.0
Lens Mount:	M12
Field of View:	112.1° (horizontal), 60° (vertical), 132.2° (diagonal)

### Illuminator

Max. IR Distance:	Up to 30 m
Wavelength:	850 nm

### Video

Col/B&W:	On, Off, Auto, IR-cut filter removable (ICR)
Wide Dynamic Range:	72 db (Digital Wide Dynamic Range)
Image Enhancement:	BLC, 3D DNR
Image Settings:	Saturation, brightness, contrast and sharpness adjustable through client software or web browser
Day/Night Switch:	Support auto, scheduled

### General

Languages:	English, German
------------	-----------------

### Frame Rate

Main Stream:	50 Hz: 25 fps (1920 × 1080, 1280 × 720) 60 Hz: 30 fps (1920 × 1080, 1280 × 720)
Sub- Stream:	50 Hz: 25 fps (640 × 480, 640 × 360) 60 Hz: 30 fps (640 × 480, 640 × 360)

### Network

Internal Memory:	128 Mb
Functions:	Anti-flicker, heartbeat, mirror, password protection, privacy mask, watermark
Video Compression:	Main Stream: H.264, H.264+, H.265, H.265+ Sub-Stream: H.264, H.265, MJPEG
Region of Interest:	Support 1 fixed region
H.264 code profile:	Baseline Profile / Main Profile / High Profile
Bit Rate:	32Kbps ~ 8Mbps, adjustable
Network Protocol:	TCP/IP, ICMP, HTTP, HTTPS, DHCP, DNS, RTP, RTSP, RTCP, NTP, IGMP, QoS, IPv6
Cyber Security:	3 levels of user management: admin, operator, user, AES Encryption for Password Protection, Complicated Password, HTTPS (SSL) Login Authentication, 802.1X authentication (EAP-MD5), Watermark, IP Address Filter, WSSE and digest authentication for ONVIF, SNMP V2, SNMP V3, TLS 1.1, Brute Force Delay Protection, Signed Firmware, Secure Boot by software check

**I/O Interface**

Network Interface:	1x 10, 100 Base T, TX PoE (RJ-45)
--------------------	-----------------------------------

**Intelligent Functions**

Intrusion Detection:	Motion Detection
Event Source:	Video tampering, network disconnected, IP address conflicted

**Approvals**

Protection Rating:	IP67 (IEC 60529-2013), IK10 (IEC 62262:2002)
Regulation:	CE, EAC, FCC, RoHS Compliant
Standard:	ONVIF (Profile S), SDK/API

**Environmental**

Operating Temperature:	-40 °C ~ 60 °C (-40 °F ~ 140 °F)
Humidity:	Less than 95%, non condensing

**Electrical**

Supply Voltage:	12 VDC, PoE (IEEE 802.3af)
Power Consumption:	Max. 6.5 W

**Mechanical**

Mount:	Pan: 0° to 355°, tilt: 0° to 75°, 2-Axis Adjustment
Dimensions:	Ø 111 × 83mm (Ø 4.4 × 3.2 inch)
Weight:	400 g (0.88 lb)

**Packaging**

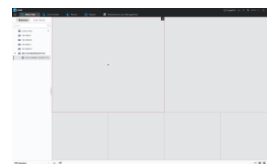
Package Dimensions:	134 x 134 x 108 mm (5.3 x 5.3 x 4.3 inch)
Package Weight:	600 g (1.3 lbs)
Packaging Unit:	24
Bulk Package Dimensions:	568 x 345 x 288 mm (22.4 x 13.6 x 11.3 inch)
Bulk Package Weight:	14900 g (32.8 lbs)

**Accessories**

GD-CW-VIEWER



GD-CW-FINDER



GD-SW-SCMS



GD-BR-AJX03



GD-BR-AMP09



GD-BR-AMW05



GD-BR-ASN01



GD-BR-AWJ02

**Dimensions**

