



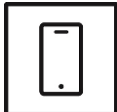
Type: Bullet - IP - Camera
Item Code: GD-CI-BC2616T
EAN CODE: 4260573060184

ESSENTIAL

Our ESSENTIAL product line is designed to deliver high-quality performance, with basic features and impressive functions, making it perfect for smaller applications.

Highlights

Smartphone App



The mobile application was developed to facilitate operators in effectively controlling and managing video systems remotely, at any time. It allows for live image viewing, playback of recorded video data, and receipt of remote notifications.

Essential Line

Many small to medium-sized systems are capable of operating without any specific requirements. Simply storing video sequences is often sufficient in the event of an incident, allowing for the course of events to be determined through recorded footage. GRUNDIG Security provides a comprehensive range of standard applications to meet these needs, including cameras that capture high-resolution images regardless of lighting conditions and recorders capable of storing video sequences for weeks or months, although privacy concerns may prevent this practice. The "Essential" product line offers high image quality, making it ideal for meeting basic requirements.

Features

- 2 Megapixel IP Camera with Full HD 1080P real time video streaming
- 3 Axis Gimbal for wall and ceiling mount
- H.264 & MJPEG compression modes
- Lens: f = 4 mm, 84° Horizontal Angle
- 0 Lux: Integrated LED IR Illuminator viewable distance up to 30m
- Support Dual Power PoE/DC12V

Specifications GD-CI-BC2616T

Camera

Image Sensor:	1/2.8" progressive Scan CMOS
Video Resolution:	1920 x 1080
Sensitivity Colour:	0.01 Lux @ F1.2 (AGC ON)
Sensitivity B/W:	0 Lux LED IR on
Shutter Speed:	1/3 ~ 1/100,000 s (Automated Electronic Shutter)
Slow Shutter:	Support

Lens

Lens Focal Length:	4 mm
Iris F-Number:	F2.2
Lens Mount:	M12
Field of View:	84°

Illuminator

Max. IR Distance:	Up to 30 m
Wavelength:	850 nm

Video

Col/B&W:	On, Off, Auto, IR-cut filter removable (ICR)
Wide Dynamic Range:	72 db (Digital Wide Dynamic Range)
Image Enhancement:	BLC, 3D DNR
Image Settings:	Saturation, brightness, contrast and sharpness adjustable through client software or web browser
Day/Night Switch:	Support auto, scheduled

Frame Rate

Main Stream:	50 Hz: 25 fps (1920 × 1080, 1280 × 960, 1280 × 720) 60 Hz: 30 fps (1920 × 1080, 1280 × 960, 1280 × 720)
Sub- Stream:	50 Hz: 25 fps (704 × 576, 640 × 480, 352 × 288, 320 × 240) 60 Hz: 30 fps (704 × 480, 640 × 480, 352 × 240, 320 × 240)

Network

Functions:	One-key reset, anti-flicker, heartbeat, mirror, password protection, privacy mask, watermark, IP-address filter
Video Compression:	Main stream: H.264 , H.264+ Sub stream: H.264, MJPEG
Region of Interest:	Support 1 fixed region
H.264 code profile:	Baseline Profile / Main Profile
Bit Rate:	32Kbps ~ 8Mbps, adjustable
Network memory:	NAS(NFS, SMB/CIFS)
Network Protocol:	TCP/IP, ICMP, HTTP, HTTPS, FTP, DHCP, DNS, DDNS, RTP, RTSP, RTCP, NTP, UPnP, SMTP, IGMP, 802.1X, QoS, IPv6, UDP, Bonjour
Cyber Security:	3 levels of user management: admin, operator, user, AES Encryption for Password Protection, Complicated Password, HTTPS (SSL) Login Authentication, 802.1X authentication (EAP-MD5), Watermark, IP Adress Filter, WSSE and digest authentication for ONVIF, TLS 1.0, TLS 1.1, Brute Force Delay Protection, Secure Boot by software check

I/O Interface

Network Interface:	1x 10, 100 Base T, TX PoE+ (RJ-45)
--------------------	------------------------------------

Intelligent Functions

Intrusion Detection:	Motion Detection
Event Source:	Video tampering, network disconnected, IP address conflicted

Approvals

Protection Rating:	IP67 (IEC 60529-2013)
Regulation:	CE, EAC, FCC, RoHS Compliant
Standard:	ONVIF (Profile S, Profile G), SDK/API

Environmental

Operating Temperature:	-40 °C ~ 60 °C (-40 °F ~ 140 °F)
Humidity:	Less than 95%, non condensing

Electrical

Supply Voltage:	12 VDC, PoE (IEEE 802.3af)
Power Consumption:	Max. 7 W

Mechanical

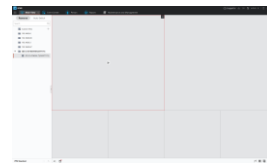
Mount:	Pan: 0° to 360°, tilt:-90° to 90°, rotation: 0° to 360°, 3-Axis Adjustment
Dimensions:	172 × 70 × 65 mm (6.77 × 2.75 × 2.56 inch)
Weight:	500 g (1.1 lb)

Accessories

GD-CW-VIEWER



GD-CW-FINDER



GD-SW-SCMS



GD-BR-AJX05

Dimensions