

Type: Bullet - IP - Camera

Item Code: GD-CI-AT8539TH

EAN CODE:

PREMIUM

The PREMIUM product line offers versatile solutions with unique and unparalleled features.

Highlights

Ultra Low Light



Designed for unparalleled performance in low-light environments, this camera incorporates advanced image processing and a high-capacity image sensor, ensuring exceptional image quality even in ultra-low light conditions.

H.265+



H.265pro+ utilizes the standard H.265/High Efficiency Video Coding (HEVC) format, but boasts advanced technologies that enable it to substantially reduce the necessary transmission bandwidth and storage capacity for maximum efficiency.

Object Classification



This technology employs a highly advanced deep learning algorithm that can discern whether the alarm was triggered by a human, a vehicle or some other object.

Deep Learning



Deep Learning is inspired by the complex structure of the human brain. This innovative method allows processing of information and performing corresponding actions based on analysis.

Features

- Deep Learning - Human and Vehicle Analysis: Self learning human and vehicle classification improves unwanted alarm filtering
- H.265/H.265+, H.264/H.264+ & MJPEG compression modes
- 8 Megapixel IP Camera with real time video streaming
- 3 Axis Gimbal for wall and ceiling mount
- Deep Learning - Person comparison: supports the comparison in real time of persons with face picture library. Search target people by picture and name features.
- Mobile communication with 5G standard
- Excellent low-light performance

Specifications GD-CI-AT8539TH

Camera

Image Sensor:	1/1.8" progressive Scan CMOS
Video Resolution:	3840 × 2160
Sensitivity Colour:	0.0005 Lux @ F1.2 (AGC ON)
Sensitivity B/W:	0.0001 Lux @ F1.2 (AGC ON)
Shutter Speed:	1 ~ 1/10.000 s
Slow Shutter:	Support
White Balance:	Manual, AWB1, AWB2, Locked WB, Fluorescent lamp, Incandescent lamp, Warm light, Natural light

Lens

Lens Focal Length:	2.8 ~ 12 mm motorized, autofocus
Iris F-Number:	F1.38 ~ F2.53
Lens Drive Type:	P-Iris
Field of View:	104° ~ 41° (horizontal), 54° ~ 23° (vertical), 126.5° ~ 47° (diagonal)

Illuminator

Max. IR Distance:	Up to 60 m
Wavelength:	850 nm

Video

Col/B&W:	On, Off, Auto, IR-cut filter removable (ICR)
Wide Dynamic Range:	140 dB
Image Enhancement:	BLC, 3D DNR, Defog, EIS, HLC
Image Settings:	Rotate mode, Saturation, Brightness, Contrast, Sharpness and white balance adjustable by client software or web browser
Day/Night Switch:	Support auto, scheduled, day, night, triggered by alarm in

Audio

Audio Compression:	G.711ulaw/G.711alaw/G.722.1/G.726/MP2L2/PCM/MP3/AAC
Environment Noise Filtering:	yes

General

DRI Range:	Detection: Wide 87 m Tele 216 m Observation: Wide 34.5 m Tele 85 m Recognition: Wide 17.4 m Tele 43.2m Identification: Wide 8.7 m Tele 21.6m The DORI (detect, observe, recognize, identify) distance gives the general idea of the camera ability to distinguish persons or objects within its field of view. It is calculated based on the camera sensor specification and the criteria given by EN 62676-4: 2015.
------------	--

Frame Rate

Main Stream:	50 Hz: up to 50 fps (3840 × 2160, 3072 × 1728, 2688 × 1520, 1280 × 720) up to 100 fps (1920 × 1080) 60 Hz: up to 60 fps (3840 × 2160, 3072 × 1728, 2688 × 1520, 1280 × 720) up to 120 fps (1920 × 1080) * High frame rate is only supported under monitoring mode
Sub- Stream:	50 Hz: 25 fps (1280 × 720, 704 × 576, 640 × 480) 60 Hz: 30 fps (1280 × 720, 704 × 480, 640 × 480)

Frame Rate

3rd Stream:	50 Hz: 25 fps (1920 × 1080, 1280 × 720, 704 × 576, 640 × 480)
	60 Hz: 30 fps (1920 × 1080, 1280 × 720, 704 × 480, 640 × 480)
4th Stream:	50 Hz: 25 fps (704 × 576, 640 × 480)
	60 Hz: 30 fps (704 × 480, 640 × 480)
5th Stream:	50 Hz: 25 fps (704 × 576, 640 × 480)
	60 Hz: 30 fps (704 × 480, 640 × 480)

Network

Users:	3 Levels: Administrator, Operator and User
Number of Clients:	Up to 20 simultaneously
Functions:	One-key reset, anti-flicker, five streams, heartbeat, mirror, password protection, privacy mask, watermark, IP-address filter
Video Compression:	H.264, H.264+, H.265, H.265+ , MJPEG
Region of Interest:	Support four fixed region for each stream, and dynamic face tracking
H.264 code profile:	Baseline Profile / Main Profile / High Profile
Bit Rate:	32Kbps ~ 16Mbps, adjustable
Scalable Video Coding (SVC):	supported
SD Memory:	Micro SD/SDHC/SDXC card slot with ANR (up to 1TB), NAS (Support NFS, SMB/CIFS)
Network Protocol:	TCP/IP, ICMP, HTTP, HTTPS, FTP, DHCP, DNS, DDNS, RTP, RTSP, RTCP, NTP, UPnP, SNMP, SMTP, IGMP, 802.1X, QoS, IPv4/IPv6, UDP, PPPoE, Bonjour, SFTP, SRTP, SSL/TLS
Cyber Security:	Password protection, complicated password, HTTPS encryption, 802.1X authentication (EAP-TLS, EAP-LEAP, EAP-MD5), watermark, IP address filter, basic and digest authentication for HTTP/HTTPS, WSSE and digest authentication for ONVIF, RTP/RTSP over HTTPS, control timeout settings, security audit log, TLS 1.2

Mobile Communications

MC Standard:	5G: 5G NR/LTE-FDD/LTE-TDD
Frequency:	5G NR: n41/n77/n78/n79 LTE-FDD: B1/B3/B5/B8 LTE-TDD: B38/39/B40/B41
SIM Card Type:	Micro SIM

I/O Interface

Audio Input/Output:	1-ch audio input and 1-ch audio output
Alarm Input/Output:	2 inputs, 2 outputs (up to 24 VDC 1 A)
Network Interface:	1x 10, 100, 1000 Base T, TX (RJ-45)

Intelligent Functions

Deep Learning Analytics:	Face Capture, Line crossing detection, intrusion detection, region entrance detection, region exiting detection, detection of people and vehicles with preselected features
Motion Detection:	On, Off, Area Setting
Intrusion Detection:	Enter and loiter in a pre-defined virtual region, up to 4 pre-defined virtual regions supported
Line Crossing:	Cross a pre-defined virtual line, up to 4 pre-defined virtual lines supported
Object Counting:	Entrance and Exit of people number is accounted and shown on screen in real time
Face Recognition:	Detection of up to 120 faces simultaneously, 10 face libraries configurable with up to 30.000 faces each
Heat Map:	Visualizes the number of people in the surveillance area over a period of time with a simple and user-friendly color scheme

Intelligent Functions

Queue Length Detection:	Supports up to 8 detection regions, and independent arming schedule and linkage method Supports 2 detection modes: regional people queuing-up, waiting time detection Generates reports to compare the efficiency of different queuing-ups and display the changing status of one queue Supports raw data export for further analysis
Crowd Density Detection:	Counts people in a predefined area. The area, the maximum number of people in it can be set
Tamper Protection:	Scene change and defocus
Event Source:	Video tampering, network disconnected, IP address conflicted, HDD full, HDD error, illegal login, motion detection
Meta data:	Detection of intrusion, line crossing, region entrance, region exiting, road traffic

Approvals

Protection Rating:	IP67 (IEC 60529-2013), IK10 (IEC 62262:2002)
Regulation:	CE, EAC, FCC, RoHS Compliant
Standard:	ONVIF (Profile S, Profile G, Profile T, Profile M), SDK/API

Environmental

Operating Temperature:	-40 °C ~ 65 °C (-40 °F ~ 149 °F)
Humidity:	Less than 95%, non condensing

Electrical

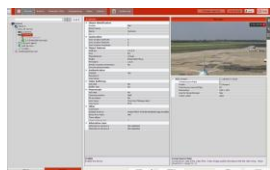
Surge Protection:	TVS 4000V Lightning Protection, Surge Protection and Voltage Transient Protection
Supply Voltage:	12 VDC, 24 VAC
Power Consumption:	Max. 25 W

Mechanical

Mount:	Pan: 0° to 355°, tilt: 0° to 90°, rotation: 0° to 360°
Dimensions:	Ø 140 × 378 mm (Ø 5.5 × 14.9 inch)
Weight:	2175 g (4.8 lb)

Packaging

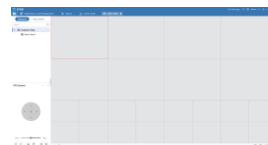
Package Dimensions:	425 x 190 x 180 mm (16.7 x 7.5 x 7.1 inch)
Package Weight:	3300 g (7.3 lbs)
Packaging Unit:	9
Bulk Package Dimensions:	600 x 560 x 450 mm (23.6 x 22 x 17.7 inch)
Bulk Package Weight:	30200 g (66.6 lbs)

Accessories

GD-CW-VIEWER



GD-CW-FINDER



GD-SW-SCMS



GD-HW-SD-128GB



GD-HW-SD-256GB

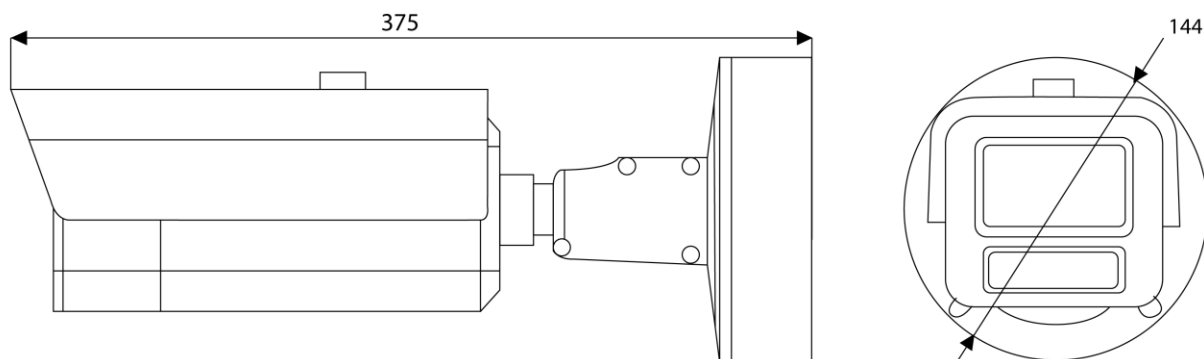


GD-BR-AMC01



GD-BR-AML03

Dimensions



Guarantee

All cameras in the “SMART”, “PRO” and “PREMIUM” product lines have an extended warranty period of 5 years on electronic parts, mechanical wear and tear on moving parts is not included. Please note our general delivery terms and conditions.