



Type: Bullet - IP - 4G/5G - Camera  
Item Code: GD-CI-AT8339TH  
EAN CODE: 4260573065844

PREMIUM

The PREMIUM product line offers versatile solutions with unique and unparalleled features.

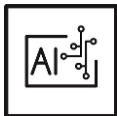
Highlights

H.265+



H.265pro+ utilizes the standard H.265/High Efficiency Video Coding (HEVC) format, but boasts advanced technologies that enable it to substantially reduce the necessary transmission bandwidth and storage capacity for maximum efficiency.

Deep Learning



Deep Learning is inspired by the complex structure of the human brain. This innovative method allows processing of information and performing corresponding actions based on analysis.

Object Classification



This technology employs a highly advanced deep learning algorithm that can discern whether the alarm was triggered by a human, a vehicle or some other object.

Features

- 8 Megapixel IP Camera with real time video streaming
- H.265/H.265+, H.264/H.264+ & MJPEG compression modes
- Mobile communication with 5G standard
- 3 Axis Gimbal for wall and ceiling mount
- Deep Learning - Human and Vehicle Analysis: Self learning human and vehicle classification improves unwanted alarm filtering
- License Plate Recognition (LPR) software included. Data import and export function, blocklist and whitelist or extended analytics functions
- Excellent low-light performance

## Specifications GD-CI-AT8339TH

### Camera

Image Sensor:	1/1.8" progressive Scan CMOS
Video Resolution:	3840 × 2160
Sensitivity Colour:	0.0005 Lux @ F1.2 (AGC ON)
Sensitivity B/W:	0.0001 Lux @ F1.2 (AGC ON)
Shutter Speed:	1 ~ 1/100,000 s
Slow Shutter:	Support
White Balance:	Manual, AWB1, AWB2, Locked WB, Fluorescent lamp, Incandescent lamp, Warm light, Natural light

### Lens

Lens Focal Length:	2.8 ~ 12 mm motorized, autofocus
Iris F-Number:	F1.38 ~ F2.53
Lens Drive Type:	P-Iris
Field of View:	104° ~ 41° (horizontal), 54° ~ 23° (vertical), 126.5° ~ 47° (diagonal)

### Illuminator

Max. IR Distance:	Up to 60 m
Wavelength:	850 nm

### Video

Col/B&W:	On, Off, Auto, IR-cut filter removable (ICR) with blue glass module to reduce ghost phenomenon
Wide Dynamic Range:	140 dB
Image Enhancement:	BLC, 3D DNR, Defog, EIS, HLC
Image Settings:	Rotate mode, Saturation, Brightness, Contrast, Sharpness and white balance adjustable by client software or web browser
Day/Night Switch:	Support auto, scheduled, day, night, triggered by alarm in
Privacy zones:	8 zones, rectangle, blackened or mosaic

### Audio

Audio Compression:	G.711ulaw/G.711alaw/G.722.1/G.726/MP2L2/PCM/MP3/AAC
Environment Noise Filtering:	yes

### General

DRI Range:	Detection: Wide 87 m Tele 216 m Observation: Wide 35 m Tele 86 m Recognition: Wide 17 m Tele 43 m Identification: Wide 9 m Tele 22 m  The DORI (detect, observe, recognize, identify) distance gives the general idea of the camera ability to distinguish persons or objects within its field of view. It is calculated based on the camera sensor specification and the criteria given by EN 62676-4: 2015.
Accessories included:	Junction box

### Frame Rate

Main Stream:	50 Hz: up to 50 fps (3840 × 2160, 3072 × 1728, 2560 × 1520, 1920 × 1080, 1280 × 720) up to 100 fps (1920 × 1080) 60 Hz: up to 60 fps (3840 × 2160, 3072 × 1728, 2688 × 1520, 1280 × 720) up to 120 fps (1920 × 1080) * High frame rate is only supported under monitoring mode
--------------	--

**Frame Rate**

Sub- Stream:	50 Hz: 25 fps (1280 × 720, 704 × 576, 640 × 480) 60 Hz: 30 fps (1280 × 720, 704 × 480, 640 × 480)
3rd Stream:	50 Hz: 25 fps (1920 × 1080, 1280 × 720, 704 × 576, 640 × 480) 60 Hz: 30 fps (1920 × 1080, 1280 × 720, 704 × 480, 640 × 480)
4th Stream:	50 Hz: 25 fps (1280 × 720, 704 × 576, 640 × 480) 60 Hz: 30 fps (1280 × 720, 704 × 480, 640 × 480)
5th Stream:	50 Hz: 25 fps (1280 × 720, 704 × 576, 640 × 480) 60 Hz: 30 fps (1280 × 720, 704 × 480, 640 × 480)

**Network**

Users:	3 Levels: Administrator, Operator and User
Number of Clients:	Up to 32, 20 simultaneously
Functions:	One-key reset, anti-flicker, five streams, heartbeat, mirror, password protection, privacy mask, watermark, IP-address filter
Video Compression:	H.264, H.264+, H.265, H.265+ , MJPEG
Region of Interest:	Support four fixed region for each stream, and dynamic face tracking
H.264 code profile:	Baseline Profile / Main Profile / High Profile
Bit Rate:	32Kbps ~ 16Mbps, adjustable
Scalable Video Coding (SVC):	supported
SD Memory:	Micro SD/SDHC/SDXC card slot with ANR (up to 1TB), NAS (Support NFS, SMB/CIFS)
Client software:	C-WERK Viewer, SCMS, IOS App, Android App (SCMS)
Web Browser:	Plug-in required live view: IE10/IE11 Non Plug-in live view: Chrome 57+, Mozilla Firefox 52+, EDGE 89+ Local Service: Chrome 57+, Firefox 52+, EDGE 89+
Network Protocol:	TCP/IP, ICMP, HTTP, HTTPS, FTP, DHCP, DNS, DDNS, RTP, RTSP, RTCP, NTP, UPnP, SNMP, SMTP, IGMP, 802.1X, QoS, IPv4/IPv6, UDP, PPPoE, Bonjour, SFTP, SRTP, SSL/TLS
Cyber Security:	Password protection, complicated password, HTTPS encryption, 802.1X authentication (EAP-TLS, EAP-LEAP, EAP-MD5), Watermark, IP-address filter, basic and digest authentication for HTTP/HTTPS, WSSE and digest authentication for ONVIF, RTP/RTSP over HTTPS, control timeout settings, security audit log, TLS 1.2, TLS 1.3, TPM 2.0, AES128/256

**Mobile Communications**

MC Standard:	5G: 5G NR/LTE-FDD/LTE-TDD
Frequency:	5G NR: n41/n77/n78/n79 LTE-FDD: B1/B3/B5/B8 LTE-TDD: B38/39/B40/B41
SIM Card Type:	Micro SIM

**I/O Interface**

Audio Input/Output:	1-ch audio input and 1-ch audio output
Alarm Input/Output:	2 inputs, 2 outputs (up to 24 VDC 1 A)
Network Interface:	1x 10, 100, 1000 Base T, TX (RJ-45)
Interfaces:	1x RS485, 1x Wiegand

**Intelligent Functions**

Deep Learning Analytics:	Line crossing detection, intrusion detection, human and vehicle object classification
Fast Moving Detection:	When fast-moving targets are detected in a designated area, the device will initiate related actions and activate an alarm.
Intrusion Detection:	Enter and loiter in a pre-defined virtual region, up to 4 pre-defined virtual regions supported
Line Crossing:	Cross a pre-defined virtual line, up to 4 pre-defined virtual lines supported
Meta data:	Detection of intrusion, line crossing, region entrance, region exiting, road traffic

**Intelligent Functions**

Motion Detection:	Adjustable whether people or motorized vehicles or only movements should be detected. The detection area and sensitivity can also be adjusted.
Region Entrance:	Enter a pre-defined virtual region from the outside place
Region Exiting:	Exit from a pre-defined virtual region
Road Traffic and Vehicle Detection:	Smart Function: Support license plate recognition of vehicles and motorcycles (only in checkpoint scenario) Support vehicle attribute detection, including vehicle type, color, brand, driving direction, etc. Support vehicle and non-vehicle counting Blocklist and allowlist: up to 10,000 records LPR Countries/Regions: 4 areas (Europe, Middle East, Asia-Pacific, Africa) and more than 124 countries/regions Accuracy (Under recommended installation and lighting conditions): License plate recognition rate $\geq 98\%$ Capture rate $\geq 99\%$ Driving direction accuracy rate $\geq 98\%$ Vehicle Capture Speed: Front installation in checkpoint scenario: up to 120 km/h Side installation: up to 80 km/h Capture Mode: License Plate and Vehicle Mode, Vehicle Priority Mode
Tamper Protection:	Detection of scene change, defocus, sudden audio increase/decrease or audio loss.
Event Source:	Video tampering, network disconnected, IP address conflicted, HDD full, HDD error, illegal login, motion detection
Event Action:	Send E-mail, trigger alarm output, notify surveillance C-WERK, upload to FTP/NAS, trigger SD-card recording and/or image capture.

**Approvals**

Protection Rating:	IP67 (IEC 60529-2013), IK10 (IEC 62262:2002), NEMA 4X (NEMA 250-2018)
Regulation:	CE, FCC, RoHS Compliant
Standard:	ISAPI, SDK, ISUP, UCAP, ONVIF (Profile S, Profile G, Profile T, Profile M), SDK/API

**Environmental**

Operating Temperature:	-40 °C ~ 65 °C (-40 °F ~ 149 °F)
Humidity:	Less than 95%, non condensing

**Electrical**

Surge Protection:	TVS 4000V Lightning Protection, Surge Protection and Voltage Transient Protection
Supply Voltage:	12 VDC, 24 VAC
Power Consumption:	Max. 25 W

**Mechanical**

Dimensions:	Ø 140 × 378 mm (Ø 5.5 × 14.9 inch)
Weight:	2175 g (4.8 lb)

**Packaging**

Package Dimensions:	425 x 190 x 180 mm (16.7 x 7.5 x 7.1 inch)
Package Weight:	3300 g (7.3 lbs)
Packaging Unit:	6
Bulk Package Dimensions:	615 x 410 x 510 mm (24.2 x 16.1 x 20.1 inch)
Bulk Package Weight:	20500g (45.19 lbs)

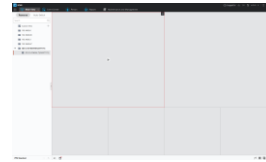
**Accessories**



GD-CW-VIEWER



GD-CW-FINDER



GD-SW-SCMS



GD-HW-SD-128GB



GD-HW-SD-256GB

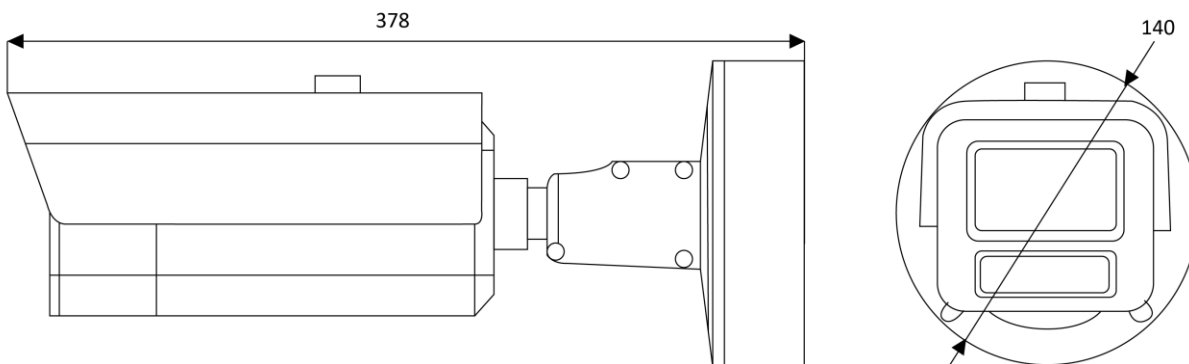


GD-BR-AMC01AC



GD-BR-AML03AC

## Dimensions



## Guarantee

All cameras in the “SMART”, “PRO” and “PREMIUM” product lines have an extended warranty period of 5 years on electronic parts, mechanical wear and tear on moving parts is not included. Please note our general delivery terms and conditions.