

Type: Fixed Dome - IP - Camera

Item Code: GD-CI-AT4634V

EAN CODE: 4260573064700

PREMIUM

The PREMIUM product line offers versatile solutions with unique and unparalleled features.

Highlights

H.265+



H.265pro+ utilizes the standard H.265/High Efficiency Video Coding (HEVC) format, but boasts advanced technologies that enable it to substantially reduce the necessary transmission bandwidth and storage capacity for maximum efficiency.

Object Classification



This technology employs a highly advanced deep learning algorithm that can discern whether the alarm was triggered by a human, a vehicle or some other object.

Features

- Deep Learning - Human and Vehicle Analysis: Self learning human and vehicle classification improves unwanted alarm filtering
- Motorized Varifocal Lens: f = 2.7 - 13.5 mm
- 0 Lux: Integrated LED IR Illuminator viewable distance up to 40m
- Built in analytics function: Detection of line crossing, intrusion, region entrance, region exit, object removal, unattended baggage, face and scene change included
- Bidirectional Audio Support

Specifications GD-CI-AT4634V

Camera

Image Sensor:	1/1.8" progressive Scan CMOS
Video Resolution:	2688 × 1520
Sensitivity Colour:	0.001 Lux @ F1.2 (AGC on, shutter speed 1/25 s)
Sensitivity B/W:	0 Lux LED IR on
Shutter Speed:	1/25 ~ 1/100,000 s
Slow Shutter:	Support
White Balance:	Manual, AWB1, AWB2, Locked WB, Fluorescent lamp, Incandescent lamp, Warm light, Natural light

Lens

Lens Focal Length:	2.7 ~ 13.5 mm motorized, autofocus
Iris F-Number:	F1.2
Lens Drive Type:	DC Auto Iris
Field of View:	115° ~ 42° (horizontal), 59° ~ 24° (vertical), 141° ~ 48° (diagonal)

Illuminator

Max. IR Distance:	Up to 40 m
White Light Distance:	Up to 40 m

Video

Col/B&W:	On, Off, Auto, IR-cut filter removable (ICR)
Wide Dynamic Range:	130 dB
Image Enhancement:	BLC, 3D DNR, Defog, HLC
Image Settings:	Rotate mode, Saturation, Brightness, Contrast, Sharpness and white balance adjustable by client software or web browser
Day/Night Switch:	Support auto, scheduled, day, night
Privacy zones:	8 zones, rectangle, blackened or mosaic

Audio

Audio Compression:	G.711ulaw/G.711alaw/G.722.1/G.726/MP2L2/PCM/MP3/AAC
Audio Bit Rate:	64Kbps(G.711)/16Kbps(G.722.1)/16Kbps(G.726)/32-196Kbps(MP2L2), 8 to 320 Kbps (MP3)/16 to 64 Kbps (AAC-LC)
Environment Noise Filtering:	yes

General

DRI Range:	Detection Range: 60 m to 149 m Recognition Range: 12 m to 29.8 m Identification Range: 6 m to 14.9 m
------------	--

Frame Rate

Main Stream:	50 Hz: 25 fps (2688 × 1520, 1920 × 1080, 1280 × 720) 60 Hz: 30 fps (2688 × 1520, 1920 × 1080, 1280 × 720)
Sub- Stream:	50 Hz: 25 fps (1280 × 720, 640 × 480, 640 × 360) 60 Hz: 30 fps (1280 × 720, 640 × 480, 640 × 360)
3rd Stream:	50 Hz: 10 fps (1920 × 1080, 1280 × 720, 640 × 480, 640 × 360) 60 Hz: 10 fps (1920 × 1080, 1280 × 720, 640 × 480, 640 × 360) * 3rd stream supported under certain settings
4th Stream:	50 Hz: 10 fps (1280 × 720, 640 × 480, 640 × 360) 60 Hz: 10 fps (1280 × 720, 640 × 480, 640 × 360)

Network	
Number of Clients:	Up to 32, 6 simultaneously Live View
Functions:	One-key reset, anti-flicker, four streams, heartbeat, mirror, password protection, privacy mask, IP-address filter, rotate, flash log, white balance, pixel counter
Video Compression:	Main Stream: H.264, H.264+, H.265, H.265+ Sub-Stream: H.264, H.265, MJPEG Third Stream: H.264, H.265 Fourth Stream: H.264, H.265, MJPEG
Region of Interest:	5 fixed region for main stream and sub-stream
H.264 code profile:	Baseline Profile / Main Profile / High Profile
Bit Rate:	256 Kbps to 8 Mbps
Scalable Video Coding (SVC):	supported
SD Memory:	Micro SD/SDHC/SDXC card slot with ANR (up to 512G), NAS (Support NFS, SMB/CIFS)
Web Browser:	Plug-in required live view: IE10/IE11 Non Plug-in live view: Chrome 57+, Mozilla Firefox 52+, EDGE 89+ Local Service: Chrome 57+, Firefox 52+, EDGE 89+
Multicasting:	supported
Network Protocol:	TCP/IP, ICMP, HTTP, HTTPS, FTP, DHCP, DNS, DDNS, RTP, RTSP, NTP, UPnP, SMTP, IGMP, 802.1X, QoS, IPv4, IPv6, UDP, Bonjour, SSL/TLS, PPPoE, SFTP, ARP, SNMP, WebSocket, WebSockets, SRTSP
Cyber Security:	3 levels of user management: admin, operator, user, AES Encryption for Password Protection, Complicated Password, HTTPS (SSL) Login Authentication, Basic and digest authentication for HTTP/HTTPS, 802.1X authentication, (EAP-LEAP), 802.1X authentication (EAP-TLS), 802.1X authentication (EAP-MD5), Watermark, IP Address Filter, WSSE and digest authentication for ONVIF, RTP/RTSP over HTTPS, Control timeout settings, Security audit log, SNMP V2, SNMP V3, TLS 1.1, TLS 1.2, TLS 1.2 with updated cipher suites including AES 256 encryption., Centralized Certificate Management, Brute Force Delay Protection, Signed Firmware, Secure Boot by software check, Secure Boot by hardware check
Streaming:	Four streams * fourth & third stream is supported under certain settings
I/O Interface	
Audio Input/Output:	1 Inputs: line in, or mic in (built-in microphone), 1 Output: line out, mono sound
Alarm Input/Output:	2, 2
Network Interface:	1x 10, 100 Base T, TX PoE+ (RJ-45)
Intelligent Functions	
Motion Detection:	Adjustable whether people, motorized or non-motorized vehicles or only movements should be detected. The detection area and sensitivity can also be adjusted.
Intrusion Detection:	People, motorized vehicles or non-motorized vehicles, enter, exit or drive over a predefined virtual area, up to 4 rules are supported
Line Crossing:	People, motorized vehicles or non-motorized vehicles cross a pre-defined virtual line, up to 4 rules are supported
Region Entrance:	Enter a pre-defined virtual region from the outside place
Region Exiting:	Exit from a pre-defined virtual region
Unattended Baggage:	Objects left over in the pre-defined region such as the baggage, purse, dangerous materials
Object Removal:	Objects removed from the pre-defined region, such as the exhibits on display
Object Counting:	Entrance and Exit of people number is accounted and shown on screen in real time
Face Detection:	Human face appears in the image can be detected and trigger event action
Queue Length Detection:	Counts people in a predefined area and measures service time. The area, the maximum number of people in it and the maximum service time can be set
Tamper Protection:	Detection of scene change, defocus, sudden audio increase/decrease or audio loss.

Intelligent Functions

Event Source:	Video tampering, network disconnected, IP address conflicted, HDD full, HDD error, illegal login, motion detection, alarm input , line crossing, intrusion, human & vehicle target classification
Event Action:	Send E-mail, trigger alarm output, notify surveillance C-WERK, upload to FTP/NAS, trigger SD-card recording and/or image capture.

Approvals

Protection Rating:	IP67 (IEC 60529-2013), IK10 (IEC 62262:2002)
Regulation:	CE, RoHS Compliant
Standard:	ONVIF (Profile S, Profile G, Profile T), ISAPI, SDK, ISUP

Environmental

Operating Temperature:	-30 °C ~ 60 °C (-22 °F ~ 140 °F)
Humidity:	Less than 95%, non condensing

Electrical

Surge Protection:	TVS 2000V Lightning Protection, Surge Protection and Voltage Transient Protection
Power Pass Through:	12 VDC, 100 mA max.
Supply Voltage:	12 VDC, 24 VAC, PoE (IEEE 802.3at)
Power Consumption:	Max. 15 W

Mechanical

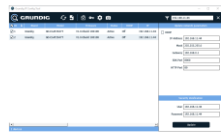
Mount:	Pan: 0° to 355°, tilt: 0° to 75°, rotation: 0° to 355°, 3-Axis Adjustment
Dimensions:	Ø 141 × 112 mm (Ø 5.6 × 4.4 inch)
Weight:	870 g (1.92 lb)

Packaging

Package Dimensions:	244 x 174 x 173 mm (9.6 x 6.9 x 6.8 inch)
Package Weight:	1200 g (2.6 lbs)
Packaging Unit:	8
Bulk Package Dimensions:	590 x 560 x 410 mm (23.2 x 22 x 16.1 inch)
Bulk Package Weight:	23000 g (50.7 lbs)

Accessories

GD-CW-VIEWER



GD-CW-FINDER



GD-SW-SCMS



GD-HW-SD-128GB



GD-HW-SD-256GB



GD-BR-AJX16



GD-BR-AMC03



GD-BR-AML01



GD-BR-AML01AC

Guarantee

All cameras in the "SMART", "PRO" and "PREMIUM" product lines have an extended warranty period of 5 years on electronic parts, mechanical wear and tear on moving parts is not included. Please note our general delivery terms and conditions.