



Type: Box/Cube - IP - Camera

Item Code: GD-CI-AP4605B

EAN CODE:

PROFESSIONAL

The PROFESSIONAL product line comprehensively covers modern video systems and offers versatile solutions for various areas of application.

Highlights

H.265+



H.265pro+ utilizes the standard H.265/High Efficiency Video Coding (HEVC) format, but boasts advanced technologies that enable it to substantially reduce the necessary transmission bandwidth and storage capacity for maximum efficiency.

Features

- 4 Megapixel IP Camera with real time video streaming
- WDR function, Colour/B&W function with removable IR cut filter
- Support Dual Power AC24V/DC12V
- H.265/H.265+, H.264/H.264+ & MJPEG compression modes
- Built in analytics function, motion detection, trip wire, intrusion detection, tamper detection

Specifications GD-CI-AP4605B

Camera

Image Sensor:	1/3" progressive Scan CMOS
Video Resolution:	2560 x 1440
Sensitivity Colour:	0.003 Lux @ F1.2 (AGC ON)
Sensitivity B/W:	0.0007 Lux @ F1.2 (AGC ON)
Shutter Speed:	1/3 ~ 1/100,000 s (Automated Electronic Shutter)
Slow Shutter:	Support
White Balance:	ATW, AWC, Manual

Lens

Lens Mount:	C, CS mount with adaptor
Lens Drive Type:	Auto Iris (DC) , Manual Iris, P-Iris

Video

Col/B&W:	On, Off, Auto, IR-cut filter removable (ICR)
AGC (Automatic gain control):	Adjustable
Wide Dynamic Range:	120 dB
Image Enhancement:	BLC, 3D DNR
Image Settings:	Saturation, brightness, contrast and sharpness adjustable through client software or web browser
Day/Night Switch:	Support auto, scheduled, day, night, triggered by alarm in

Audio

Audio Compression:	G.711ulaw/G.711alaw/G.722.1/G.726/MP2L2/PCM/AAC
Audio Bit Rate:	64 Kbps (G.711ulaw/G.711alaw)/16 Kbps (G.722.1)/16 Kbps (G.726)/16 Kbps to 64 Kbps (AAC)/32 to 192 Kbps (MP2L2)/32 Kbps (PCM)
Environment Noise Filtering:	yes

General

Reset Button:	yes
---------------	-----

Network

Users:	Up to 32 users, 3 levels: Administrator, Operator and User
Video Compression:	Main Stream: H.264, H.264+, H.265, H.265+ Sub-Stream: H.264, H.265, MJPEG Third Stream: H.264, H.265
Region of Interest:	1 fixed region for main stream and sub-stream
H.264 code profile:	Baseline Profile / Main Profile / High Profile
H.265 Code Profile:	Main Profile
Bit Rate:	32Kbps ~ 8Mbps, adjustable
Scalable Video Coding (SVC):	supported
SD Memory:	Micro SD/SDHC/SDXC card slot with ANR (up to 256G), NAS (Support NFS, SMB/CIFS)
Web Browser:	MS Internet Explorer 8.0+ , Mozilla Firefox 30.0-51, Google Chrome 31.0-44, Apple Safari 8.0+
Network Protocol:	TCP/IP, IPv4, ICMP, HTTP, HTTPS, FTP, DHCP, DNS, DDNS, RTP, RTSP, RTCP, NTP, UPnP, SMTP, IGMP, 802.1X, QoS, IPv6, Bonjour, UDP, PPPoE, SNMP

Network

Cyber Security:	3 levels of user management: admin, operator, user, AES Encryption for Password Protection, Complicated Password, HTTPS (SSL) Login Authentication, Basic and digest authentication for HTTP/HTTPS, 802.1X authentication, (EAP-LEAP), 802.1X authentication (EAP-TLS), 802.1X authentication (EAP-MD5), Watermark, IP Address Filter, WSSE and digest authentication for ONVIF, SNMP V2, SNMP V3, TLS 1.0, TLS 1.1, Brute Force Delay Protection, Signed Firmware, Secure Boot by hardware check
-----------------	---

I/O Interface

Audio Input/Output:	1-ch audio input and 1-ch audio output
Alarm Input/Output:	1 input, 1 output (up to 12 VDC, 30 mA)
Network Interface:	1x 10, 100 Base T, TX PoE+ (RJ-45)
Serial Interface(s):	1x RS-232, 1x RS-485

Intelligent Functions

Intrusion Detection:	Enter and loiter in a pre-defined virtual region
Line Crossing:	Cross a pre-defined virtual line
Loitering:	People stay in a previously defined area for longer than the preset time
Event Source:	Video tampering, network disconnected, IP address conflicted, HDD full, HDD error, illegal login, motion detection
Event Action:	Recording: Pre-event, post-event memory card and/or network storage. Picture upload: FTP, HTTP and NAS. Trigger E-mail notification: HTTP, ISAPI. Alarm output and notification to C-WERK VMS. Events are depending on schedule settings.

Approvals

Regulation:	CE, EAC, FCC, RoHS Compliant
Standard:	ONVIF (Profile S, Profile G), SDK/API

Environmental

Operating Temperature:	-30 °C ~ 60 °C (-22 °F ~ 140 °F)
Humidity:	Less than 95%, non condensing

Electrical

Supply Voltage:	12 VDC, 24 VAC, PoE (IEEE 802.3af)
Power Consumption:	Max. 7 W

Mechanical

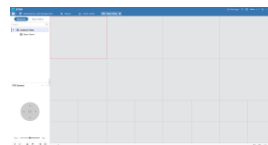
Weight:	820 g (1.8 lb)
---------	----------------

Accessories

GD-CW-VIEWER



GD-CW-FINDER



GD-SW-SCMS



GD-HW-SD-128GB



GD-HW-SD-256GB



GD-LD-AC0550DC-IR



GD-BR-AWA03

Dimensions

Guarantee

All cameras in the “SMART”, “PRO” and “PREMIUM” product lines have an extended warranty period of 5 years on electronic parts, mechanical wear and tear on moving parts is not included. Please note our general delivery terms and conditions.