



Type: Turret - IP - Camera
 Item Code: GD-CI-AC6614E
 EAN CODE: 4260573064595

ESSENTIAL

Our ESSENTIAL product line is designed to deliver high-quality performance, with basic features and impressive functions, making it perfect for smaller applications.

Highlights

H.265+



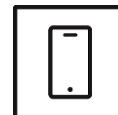
H.265pro+ utilizes the standard H.265/High Efficiency Video Coding (HEVC) format, but boasts advanced technologies that enable it to substantially reduce the necessary transmission bandwidth and storage capacity for maximum efficiency.

Object Classification



This technology employs a highly advanced deep learning algorithm that can discern whether the alarm was triggered by a human, a vehicle or some other object.

Smartphone App



The mobile application was developed to facilitate operators in effectively controlling and managing video systems remotely, at any time. It allows for live image viewing, playback of recorded video data, and receipt of remote notifications.

Essential Line

Many small to medium-sized systems are capable of operating without any specific requirements. Simply storing video sequences is often sufficient in the event of an incident, allowing for the course of events to be determined through recorded footage. GRUNDIG Security provides a comprehensive range of standard applications to meet these needs, including cameras that capture high-resolution images regardless of lighting conditions and recorders capable of storing video sequences for weeks or months, although privacy concerns may prevent this practice. The "Essential" product line offers high image quality, making it ideal for meeting basic requirements.

Features

- Lens: f = 2.8 mm
- 3 Axis Gimbal for wall and ceiling mount
- Support Dual Power PoE/DC12V
- H.265/H.265+, H.264/H.264+ & MJPEG compression modes
- 0 Lux: Integrated LED IR Illuminator viewable distance up to 30m
- 6 Megapixels CMOS, Colour/B&W Camera

Specifications GD-CI-AC6614E

Camera

Image Sensor:	1/2.4" progressive Scan CMOS
Video Resolution:	3200 x 1800
Sensitivity Colour:	0.005 Lux @ F1.6 (AGC ON)
Sensitivity B/W:	0 Lux LED IR on
Shutter Speed:	1/3 ~ 1/100,000 s (Automated Electronic Shutter)
Slow Shutter:	Support

Lens

Lens Focal Length:	2.8 mm
Iris F-Number:	F1.6
Lens Mount:	M12
Field of View:	105° (horizontal), 55° (vertical), 127° (diagonal)

Illuminator

Max. IR Distance:	Up to 30 m
White Light Distance:	Up to 30 m
Wavelength:	850 nm
White LED:	yes

Video

Col/B&W:	On, Off, Auto, IR-cut filter removable (ICR)
Wide Dynamic Range:	120 dB
Image Enhancement:	BLC, 3D DNR, HLC
Image Settings:	Rotate mode, Saturation, Brightness, Contrast, Sharpness and white balance adjustable by client software or web browser
Day/Night Switch:	Support auto, scheduled, day, night
Privacy zones:	4 zones, rectangle

Audio

Audio Compression:	G.711ulaw/G.711alaw/G.722.1/G.726/MP2L2/PCM/AAC
Audio Bit Rate:	64 Kbps (G.711ulaw)/64 Kbps (G.711alaw)/16 Kbps (G.722.1)/16 Kbps (G.726)/32 to 160 Kbps (MP2L2)/16 to 64 Kbps (AAC-LC)
Environment Noise Filtering:	yes

General

DRI Range:	Detection Range: 76 m Recognition Range: 15 m Identification Range: 7 m
------------	---

Frame Rate

Main Stream:	50 Hz: 20 fps (3200 × 1800, 2688 × 1520, 1920 × 1080, 1280 × 720) 60 Hz: 20 fps (3200 × 1800, 2688 × 1520, 1920 × 1080, 1280 × 720)
Sub- Stream:	50 Hz: 20 fps (1280 × 720, 640 × 480, 640 × 360) 60 Hz: 20 fps (1280 × 720, 640 × 480, 640 × 360)

Network

Users:	Up to 32 users, 3 levels: Administrator, Operator and User
Number of Clients:	Up to 6 simultaneously
Functions:	Anti-flicker, heartbeat, mirror, password protection, privacy mask, watermark, Ip-address filter

Network

Video Compression:	Main Stream: H.264, H.264+, H.265, H.265+ Sub-Stream: H.264, H.265, MJPEG
Region of Interest:	Support 1 fixed region
H.264 code profile:	Baseline Profile / Main Profile / High Profile
Bit Rate:	32Kbps ~ 16Mbps, adjustable
SD Memory:	Micro SD/SDHC/SDXC card slot with ANR (up to 256G), NAS (Support NFS, SMB/CIFS)
Web Browser:	Plug-in required live view: IE10/IE11 Non Plug-in live view: Chrome 57+, Mozilla Firefox 52+ Local Service: Chrome 57+, Firefox 52+
Network Protocol:	TCP/IP, ICMP, HTTP, FTP, DHCP, DNS, RTP, RTSP, NTP, SMTP, IGMP, QoS, IPv6, UDP
Cyber Security:	3 levels of user management: admin, operator, user, AES Encryption for Password Protection, Complicated Password, HTTPS (SSL) Login Authentication, 802.1X authentication (EAP-MD5), Watermark, IP Address Filter, WSSE and digest authentication for ONVIF, TLS 1.0, TLS 1.1, Brute Force Delay Protection, Secure Boot by software check

I/O Interface

Audio Inputs:	Built in Microphone
Network Interface:	1x 10, 100 Base T, TX PoE (RJ-45)

Intelligent Functions

Intrusion Detection:	Motion detection with human and vehicle detection
Event Source:	Video tampering, network disconnected, IP address conflicted

Approvals

Protection Rating:	IP67 (IEC 60529-2013)
Regulation:	CE, RoHS Compliant
Standard:	ONVIF (Profile S, Profile G, Profile T), SDK/API

Environmental

Operating Temperature:	-30 °C ~ 60 °C (-22 °F ~ 140 °F)
Humidity:	Less than 95%, non condensing

Electrical

Supply Voltage:	12 VDC, PoE (IEEE 802.3af)
Power Consumption:	Max. 6.5 W

Mechanical

Mount:	Pan: 0° to 360°, tilt: 0° to 75°, rotation: 0° to 360°, 3-Axis Adjustment
Dimensions:	Ø 110 x 89 mm (Ø 4.32 x 3.5 inch)
Weight:	380 g (0.84 lb)

Packaging

Package Dimensions:	150 x 150 x 141 mm (5.9 x 5.9 x 5.6 inch)
Package Weight:	550 g (1.2 lbs)
Packaging Unit:	27
Bulk Package Dimensions:	467 x 467 x 446 mm (18.4 x 18.4 x 17.6 inch)
Bulk Package Weight:	16500 g (36.4 lbs)

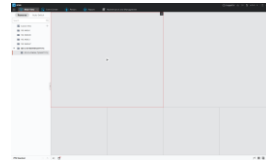
Accessories



GD-CW-VIEWER



GD-CW-FINDER



GD-SW-SCMS



GD-HW-SD-128GB



GD-HW-SD-256GB



GD-BR-AJX04



GD-BR-AJX14



GD-BR-AMC03



GD-BR-AMW14